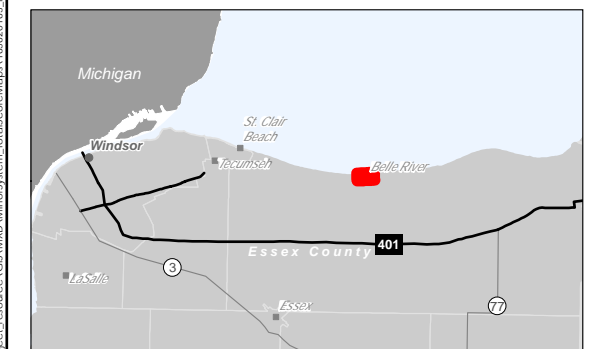
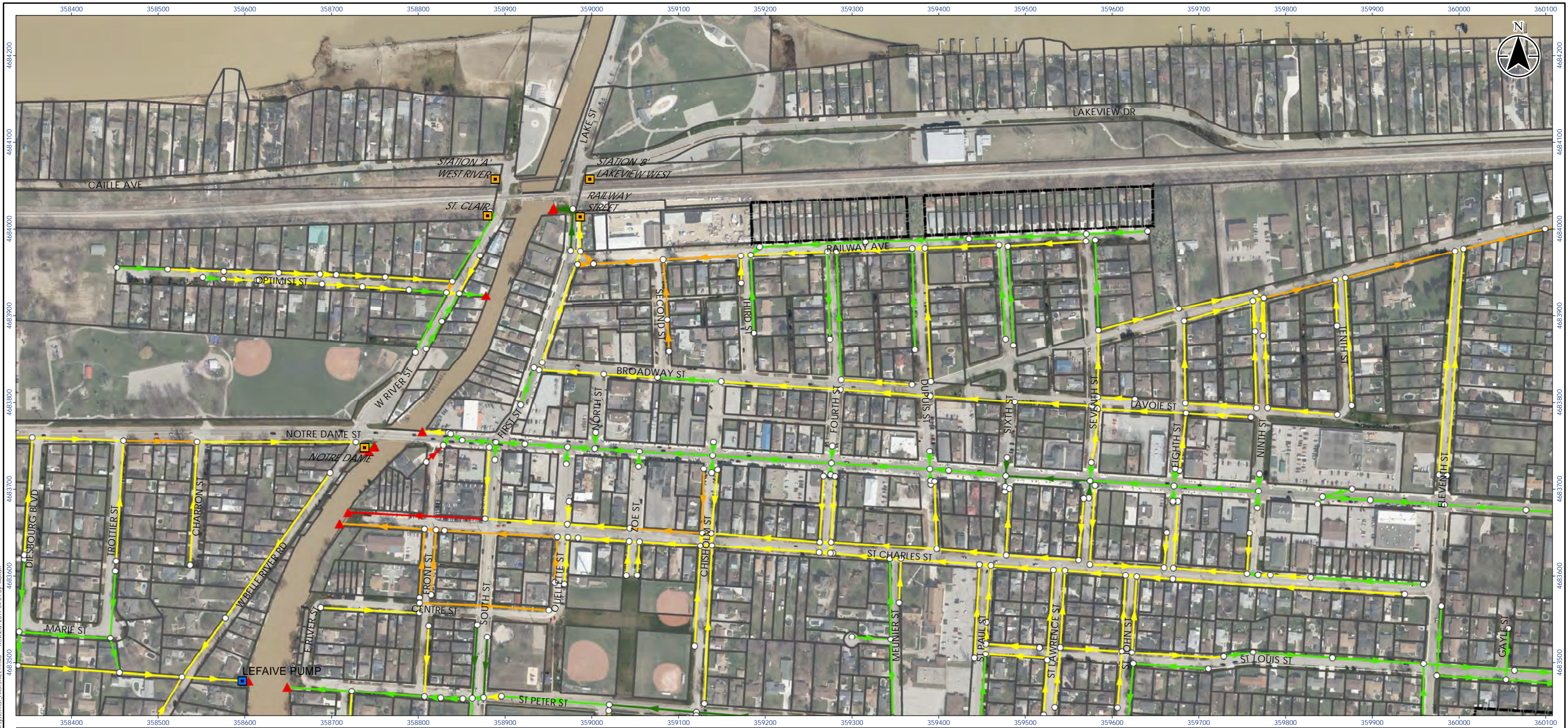


**Appendix G**  
**Minor System Mapping**



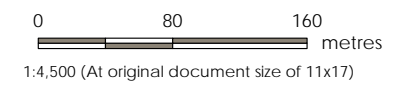


**Legend**

- Parcel Fabric
- Subdivision
- Proposed Pond
- Existing Ponds
- Storm Pond Pump
- Municipal Drain Pump
- Model Nodes
- Outfalls

**Total Score**

- 8 - 10
- 6 - 8
- 4 - 6
- 2 - 4
- 0 - 2



**Stantec** **DRAFT**

Project Location: Town of Lakeshore  
 Prepared by LMF on 2019-04-01

Client/Project: LAKESHORE SWMP

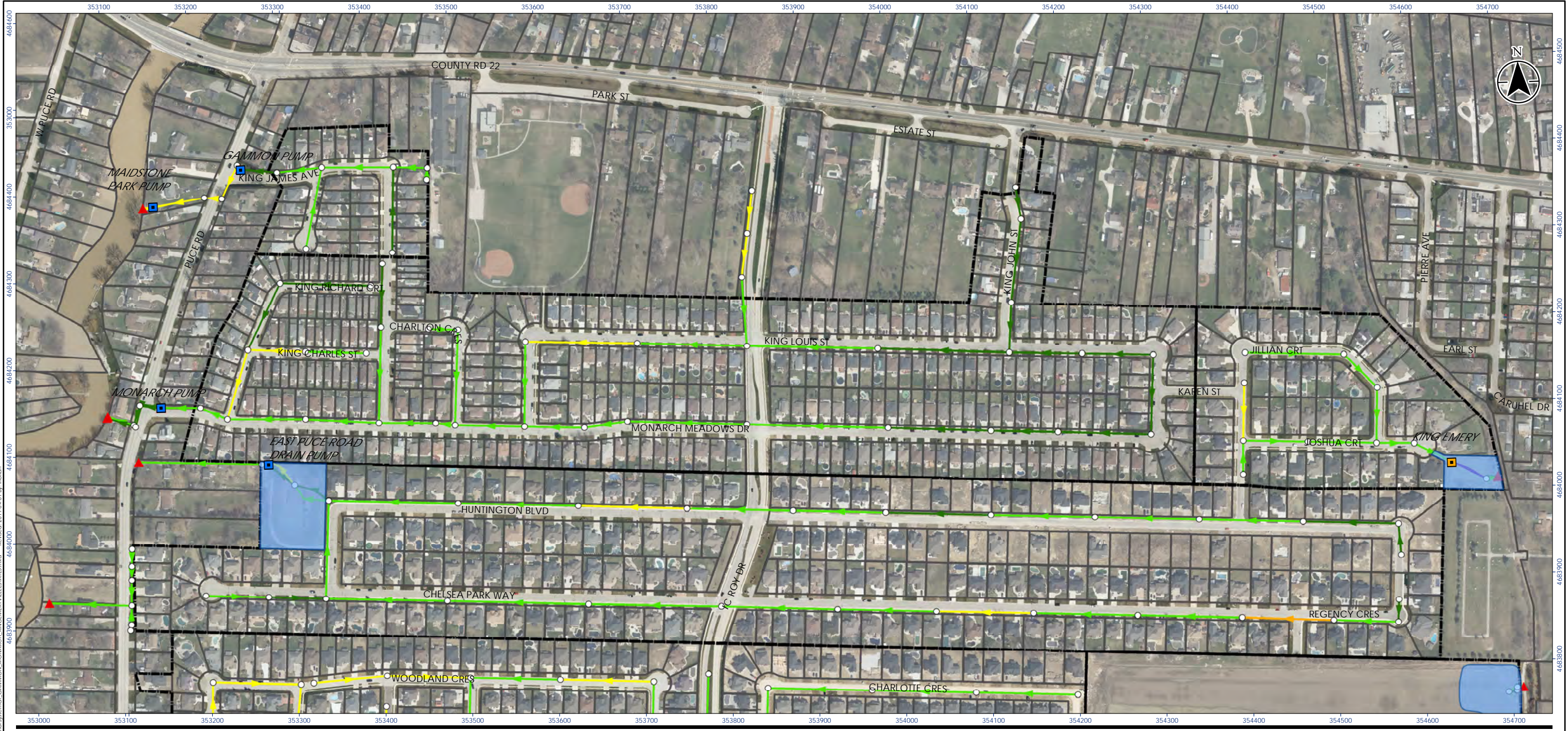
Figure No.:

Title: **Minor System Assessment - First Street**

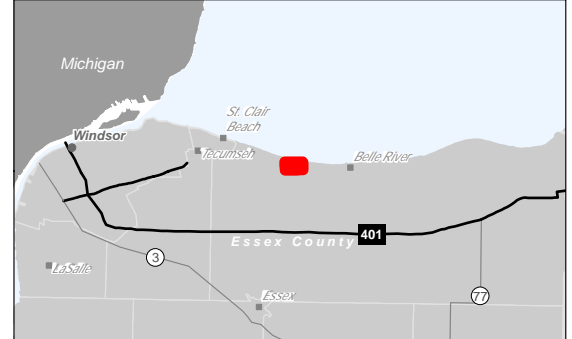
**Notes**

- Coordinate System: NAD 1983 UTM Zone 17N
- Base features produced under license with the Ontario Ministry of Natural Resources and Forestry © Queen's Printer for Ontario, 2017.
- Orthoimagery © First Base Solutions, 2016. Imagery Date, 2018.

Disclaimer: Stantec assumes no responsibility for data supplied in electronic format. The recipient accepts full responsibility for verifying the accuracy and completeness of the data. The recipient releases Stantec, its officers, employees, consultants and agents, from any and all claims arising in any way from the content or provision of the data.



W:\active\165620165\Project\_Resources\GIS\MapX\MXD\MinorSystem\_TotalsScoreMap\165620165\_MinorSystem.mxd Revised: 2019-04-01 By: Iflorian  
 W:\active\165620165\Project\_Resources\GIS\MapX\MXD\MinorSystem\_TotalsScoreMap\165620165\_MinorSystem.mxd Revised: 2019-04-01 By: Iflorian

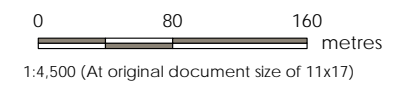


**Legend**

- Parcel Fabric
- Subdivision
- Proposed Pond
- Existing Ponds
- Storm Pond Pump
- Municipal Drain Pump
- Model Nodes
- Outfalls

**Total Score**

- 8 - 10
- 6 - 8
- 4 - 6
- 2 - 4
- 0 - 2



**Stantec**

**DRAFT**

Project Location: Town of Lakeshore  
 Client/Project: LAKESHORE SWMP

Figure No. \_\_\_\_\_

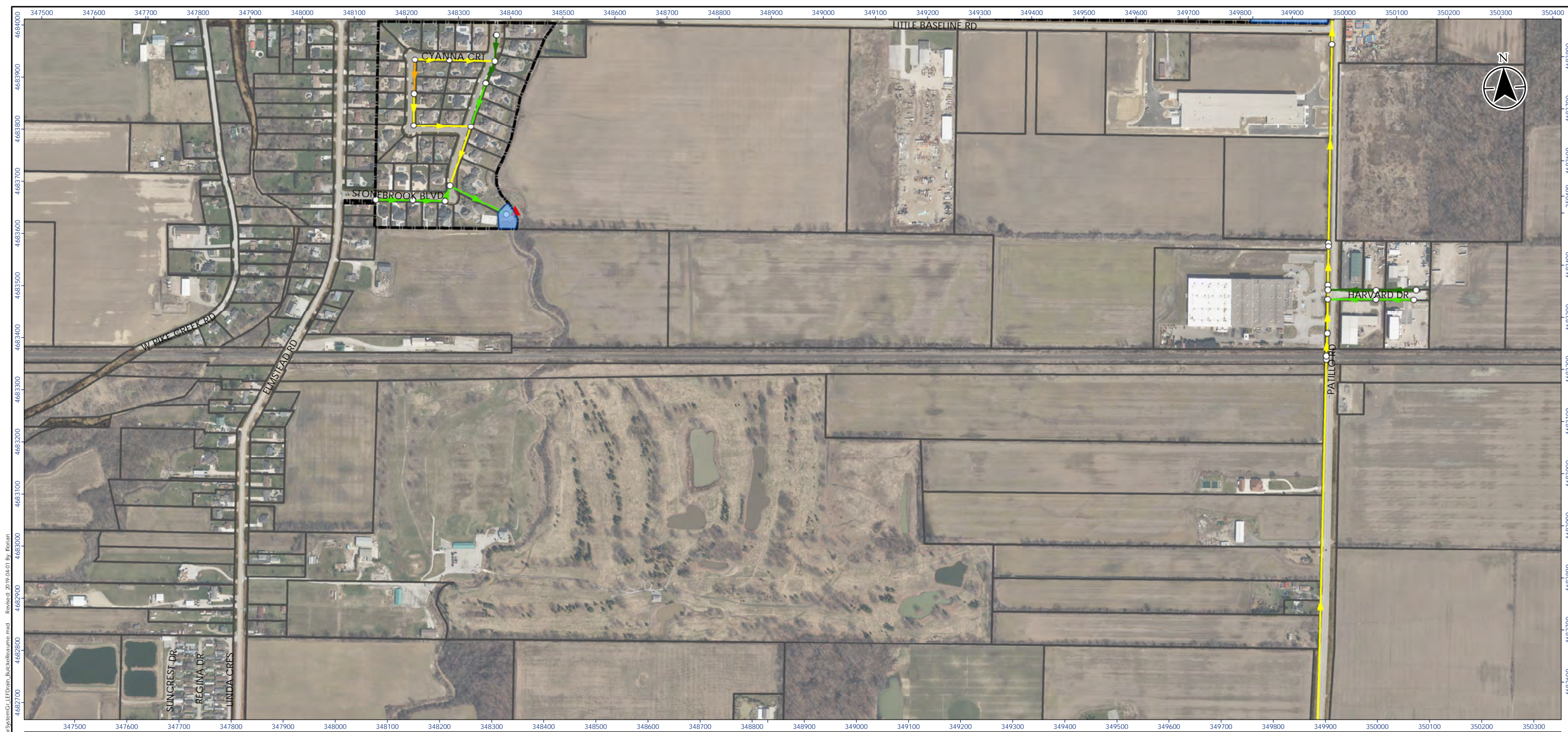
Title: **Minor System Assessment - Gammon, Monarch, King Estates & Chelsea Park**

165620165 REVA  
 Prepared by LMF on 2019-04-01

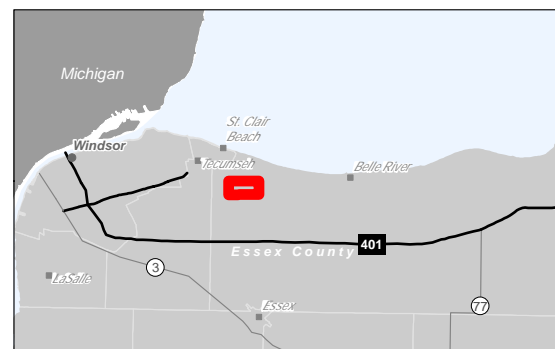
**Notes**

- Coordinate System: NAD 1983 UTM Zone 17N
- Base features produced under license with the Ontario Ministry of Natural Resources and Forestry © Queen's Printer for Ontario, 2017.
- Orthoimagery © First Base Solutions, 2016. Imagery Date, 2018.

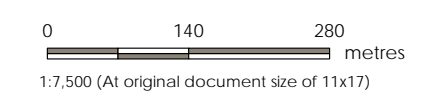
Disclaimer: Stantec assumes no responsibility for data supplied in electronic format. The recipient accepts full responsibility for verifying the accuracy and completeness of the data. The recipient releases Stantec, its officers, employees, consultants and agents, from any and all claims arising in any way from the content or provision of the data.



W:\active\165620165\Project\_Resources\GSD\Map\MinorSystem\_TotalsScoreMap\165620165\_MinorSystem\_G\_LeflDrain\_BulckeReaume.mxd Revised: 2019-04-01 By: Florian



Legend		Total Score	
	Parcel Fabric		8 - 10
	Subdivision		6 - 8
	Proposed Pond		4 - 6
	Existing Ponds		2 - 4
	Storm Pond Pump		0 - 2
	Municipal Drain Pump		
	Model Nodes		
	Outfalls		



**Stantec** **DRAFT**

---

Project Location: Town of Lakeshore 165620165 REVA  
Prepared by LMF on 2019-04-01

---

Client/Project: LAKESHORE SWMP

---

Figure No. \_\_\_\_\_

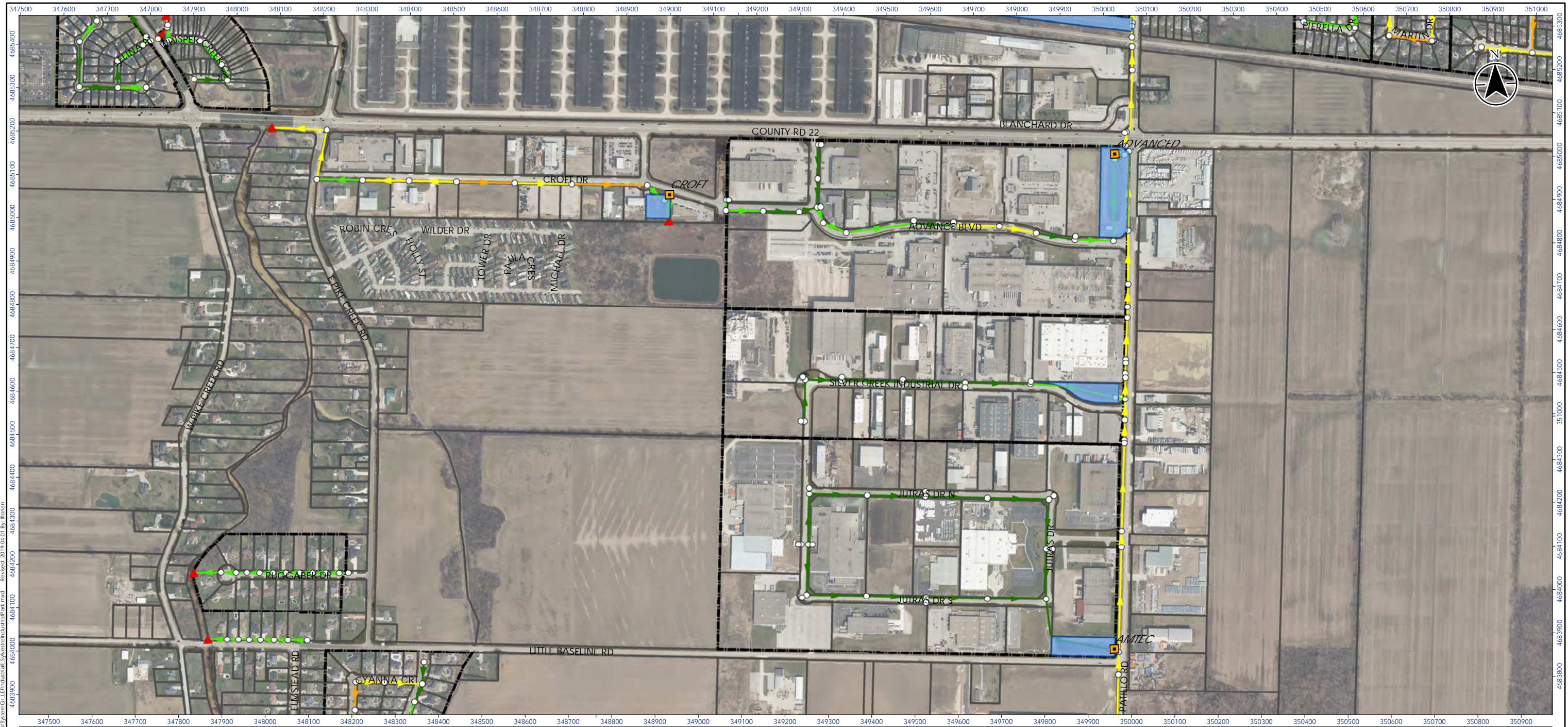
---

Title: **Minor System Assessment - Leffler Drain & Bulcke/Reaume**

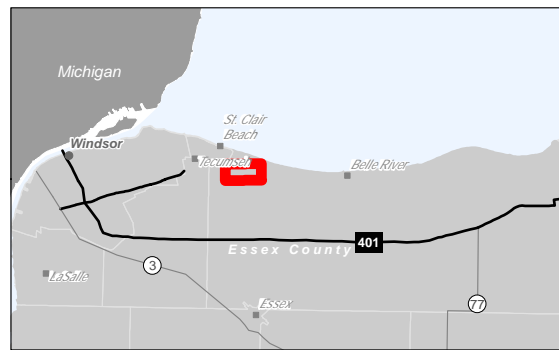
**Notes**

- Coordinate System: NAD 1983 UTM Zone 17N
- Base features produced under license with the Ontario Ministry of Natural Resources and Forestry © Queen's Printer for Ontario, 2017.
- Orthoimagery © First Base Solutions, 2016. Imagery Date, 2018.

Disclaimer: Stantec assumes no responsibility for data supplied in electronic format. The recipient accepts full responsibility for verifying the accuracy and completeness of the data. The recipient releases Stantec, its officers, employees, consultants and agents, from any and all claims arising in any way from the content or provision of the data.

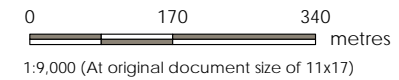


W:\active\165620165\Project\_Resources\GIS\Map\MinorSystem\_TotalsScoreMap\165620165\_MinorSystem\_TotalsScoreMap.mxd  
 Revised: 2019-04-01 By: Jordan  
 W:\active\165620165\Project\_Resources\GIS\Map\MinorSystem\_TotalsScoreMap\165620165\_MinorSystem\_TotalsScoreMap.mxd  
 Prepared: 2019-04-01 By: Jordan



**Legend**

- |  |                      |                    |
|--|----------------------|--------------------|
|  | Parcel Fabric        | <b>Total Score</b> |
|  | Subdivision          |                    |
|  | Proposed Pond        |                    |
|  | Existing Ponds       |                    |
|  | Storm Pond Pump      |                    |
|  | Municipal Drain Pump |                    |
|  | Model Nodes          |                    |
|  | Outfalls             | 8 - 10             |
|  |                      | 6 - 8              |
|  |                      | 4 - 6              |
|  |                      | 2 - 4              |
|  |                      | 0 - 2              |



**DRAFT**

Project Location: Town of Lakeshore  
 Prepared by LMF on 2019-04-01

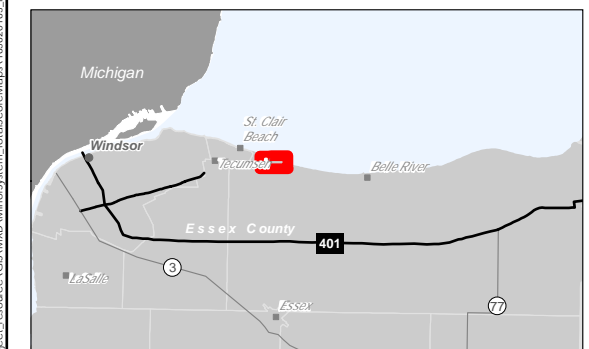
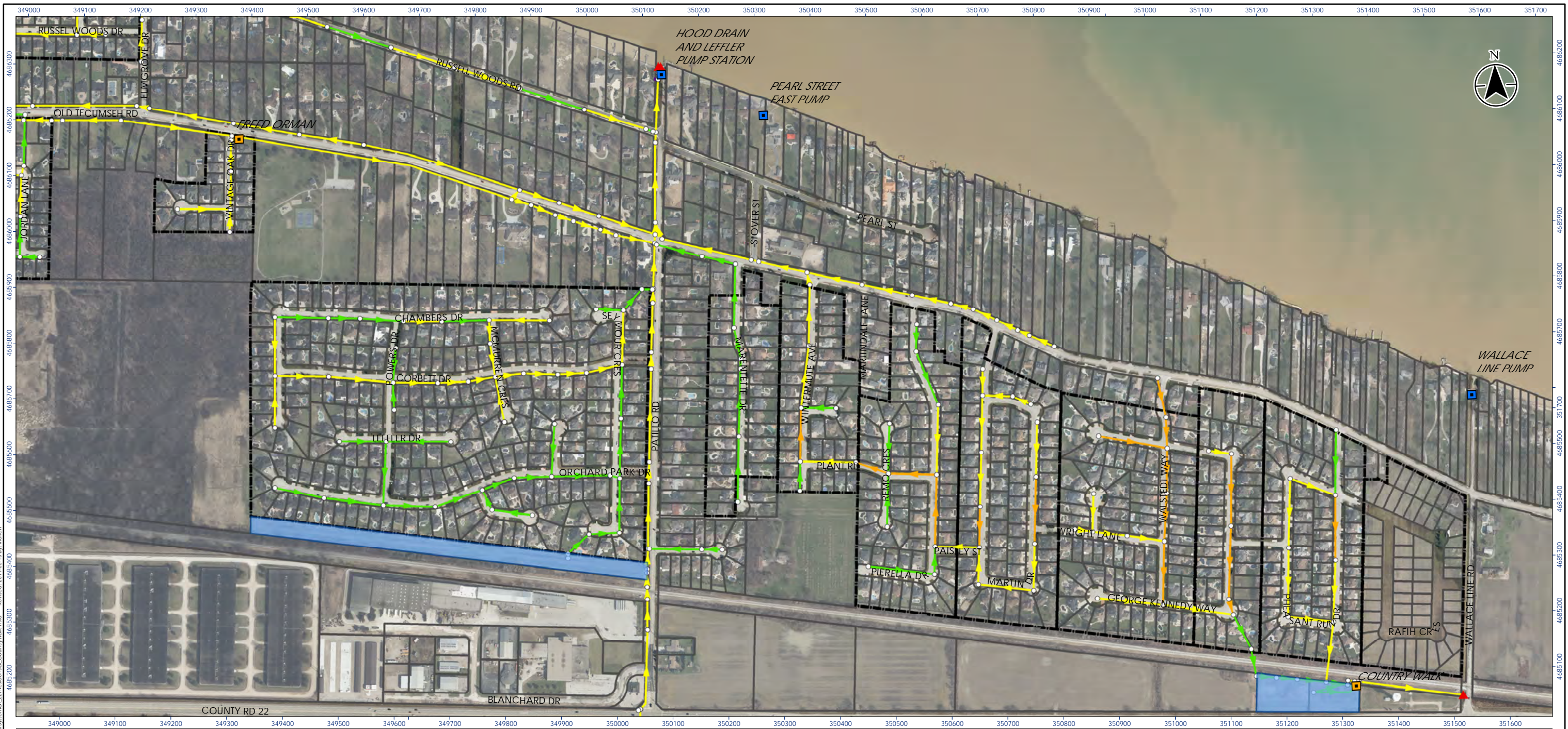
Client/Project: LAKESHORE SWMP

Figure No.

Title: Minor System Assessment - Leffler Industrial

- Notes**
1. Coordinate System: NAD 1983 UTM Zone 17N
  2. Base features produced under license with the Ontario Ministry of Natural Resources and Forestry © Queen's Printer for Ontario, 2017.
  3. Orthoimagery © First Base Solutions, 2016. Imagery Date, 2018.

Disclaimer: Stantec assumes no responsibility for data supplied in electronic format. The recipient accepts full responsibility for verifying the accuracy and completeness of the data. The recipient releases Stantec, its officers, employees, consultants and agents, from any and all claims arising in any way from the content or provision of the data.

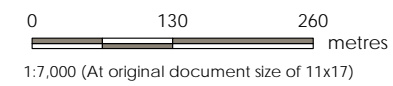


**Legend**

- Parcel Fabric
- Subdivision
- Proposed Pond
- Existing Ponds
- Storm Pond Pump
- Municipal Drain Pump
- Model Nodes
- Outfalls

**Total Score**

- 8 - 10
- 6 - 8
- 4 - 6
- 2 - 4
- 0 - 2



**Stantec** **DRAFT**

Project Location: Town of Lakeshore  
 Prepared by LMF on 2019-03-15

Client/Project: LAKESHORE SWMP

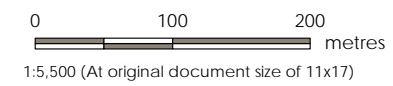
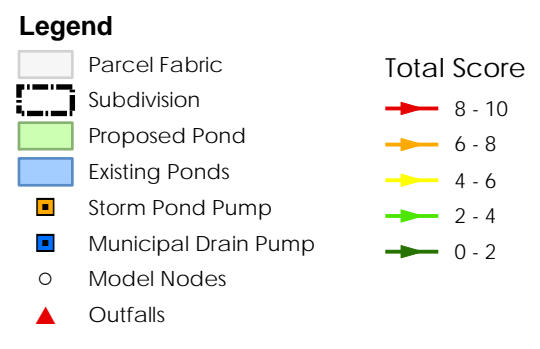
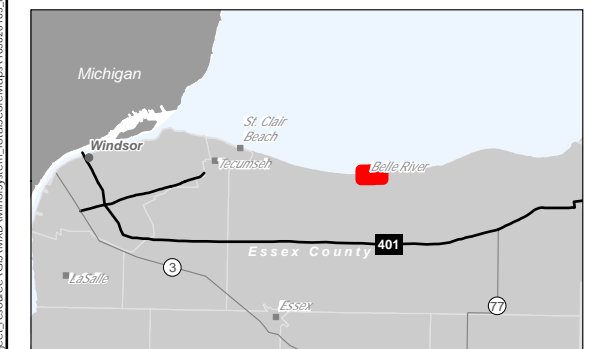
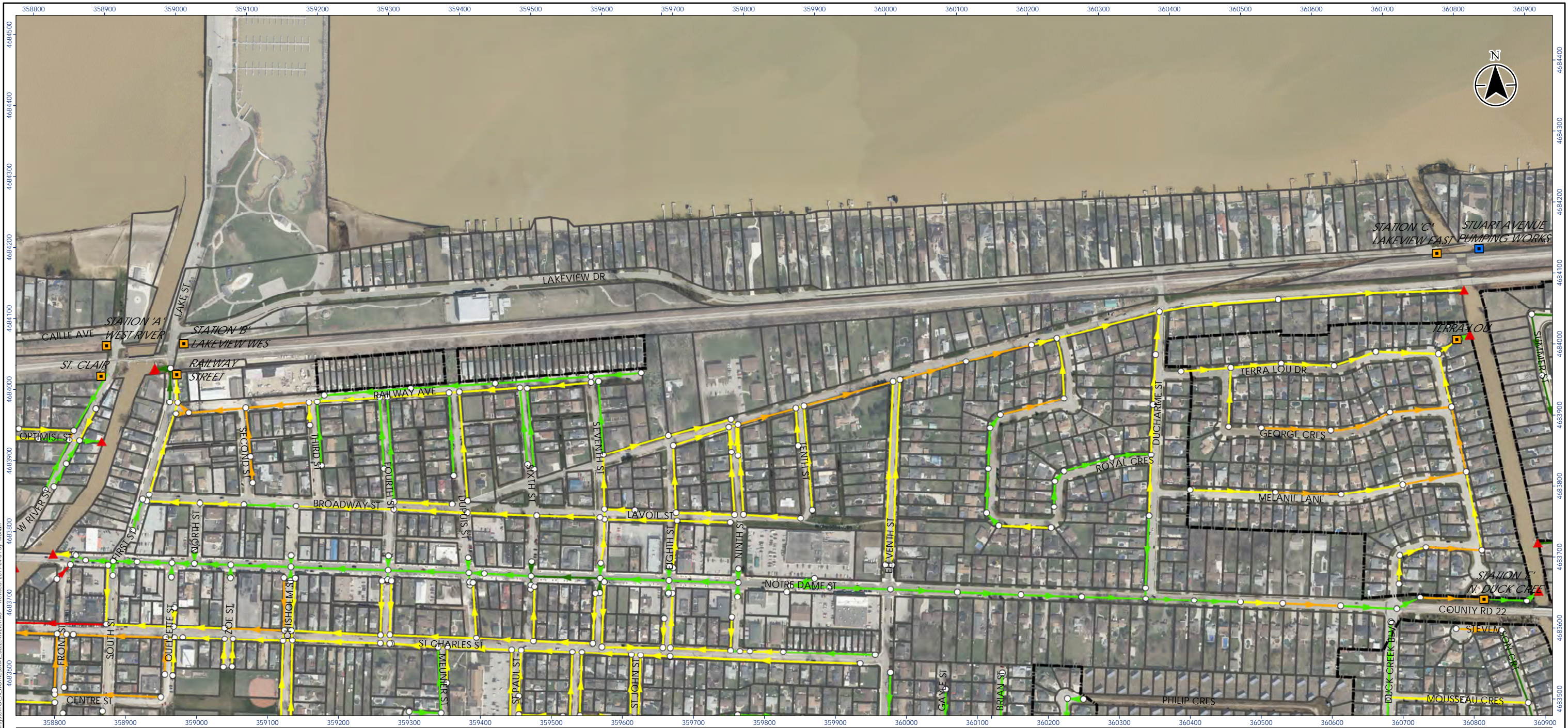
Figure No. \_\_\_\_\_

Title: **Minor System Assessment - Leffler Residential & Country Walk**

**Notes**

- Coordinate System: NAD 1983 UTM Zone 17N
- Base features produced under license with the Ontario Ministry of Natural Resources and Forestry © Queen's Printer for Ontario, 2017.
- Orthoimagery © First Base Solutions, 2016. Imagery Date, 2018.

Disclaimer: Stantec assumes no responsibility for data supplied in electronic format. The recipient accepts full responsibility for verifying the accuracy and completeness of the data. The recipient releases Stantec, its officers, employees, consultants and agents, from any and all claims arising in any way from the content or provision of the data.



**Stantec** **DRAFT**

---

Project Location: Town of Lakeshore  
 Client/Project: LAKESHORE SWMP

---

Figure No. \_\_\_\_\_

---

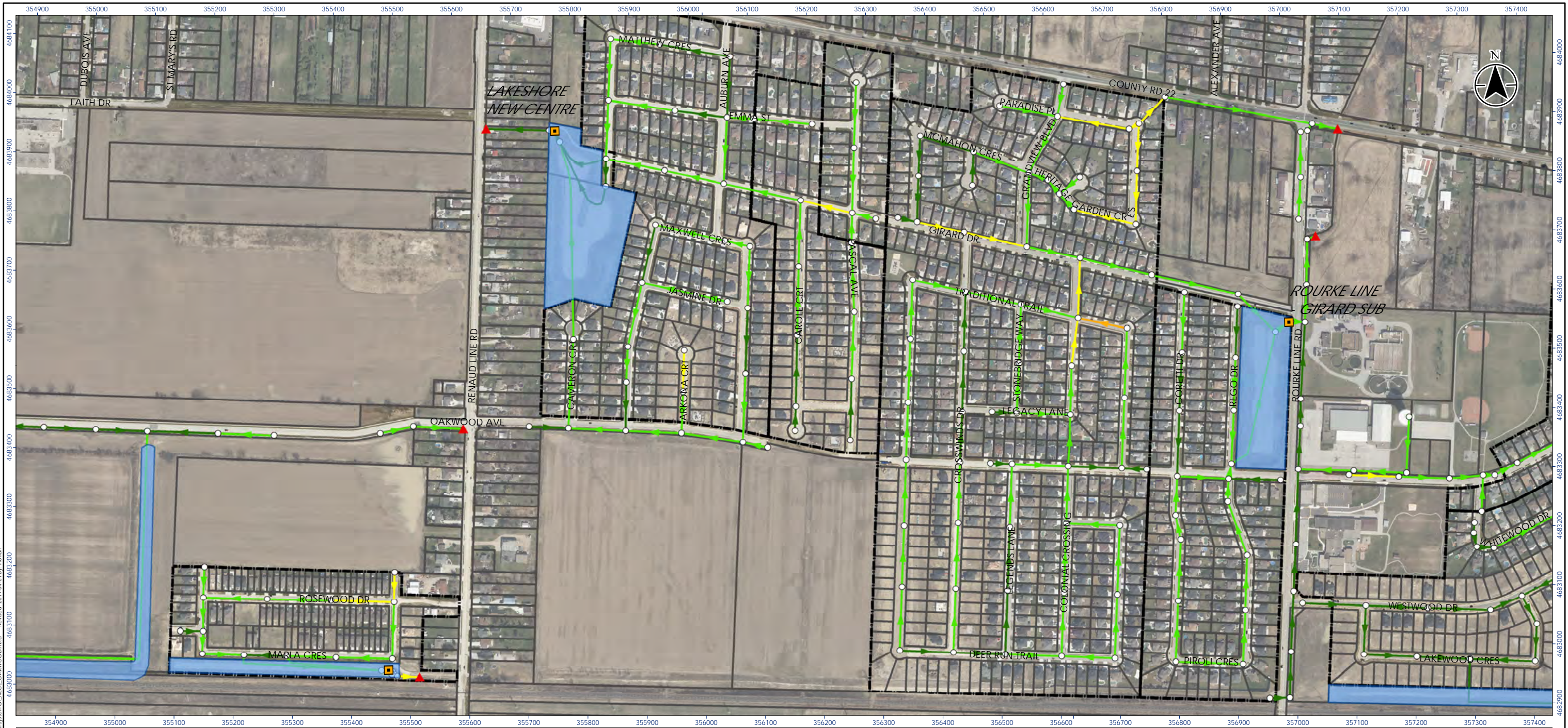
Title: **Minor System Assessment - Belle River: North of Notre Dame Street**

165620165 REVA  
Prepared by LMF on 2019-04-01

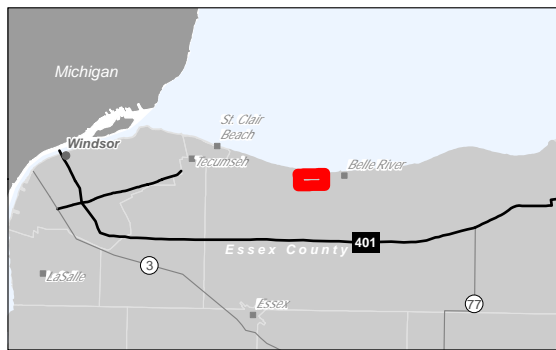
**Notes**

- Coordinate System: NAD 1983 UTM Zone 17N
- Base features produced under license with the Ontario Ministry of Natural Resources and Forestry © Queen's Printer for Ontario, 2017.
- Orthoimagery © First Base Solutions, 2016. Imagery Date, 2018.

Disclaimer: Stantec assumes no responsibility for data supplied in electronic format. The recipient accepts full responsibility for verifying the accuracy and completeness of the data. The recipient releases Stantec, its officers, employees, consultants and agents, from any and all claims arising in any way from the content or provision of the data.

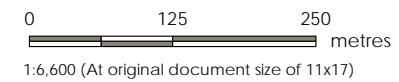


W:\active\165620165\Project\_Resources\GIS\Map\MinorSystem\_TotalsScoreMap\165620165\_MinorSystem.mxd Revised: 2019-04-01 By: Iforlan  
 N:\CE\_OAKWOOD.mxd  
 W:\active\165620165\Project\_Resources\GIS\Map\MinorSystem\_TotalsScoreMap\165620165\_MinorSystem.mxd Revised: 2019-04-01 By: Iforlan



**Legend**

- Parcel Fabric
  - Subdivision
  - Proposed Pond
  - Existing Ponds
  - Storm Pond Pump
  - Municipal Drain Pump
  - Model Nodes
  - Outfalls
- 
- Total Score**
- 8 - 10
  - 6 - 8
  - 4 - 6
  - 2 - 4
  - 0 - 2



**DRAFT**

Project Location: 165620165 REVA  
 Town of Lakeshore Prepared by LMF on 2019-04-01

Client/Project: LAKESHORE SWMP

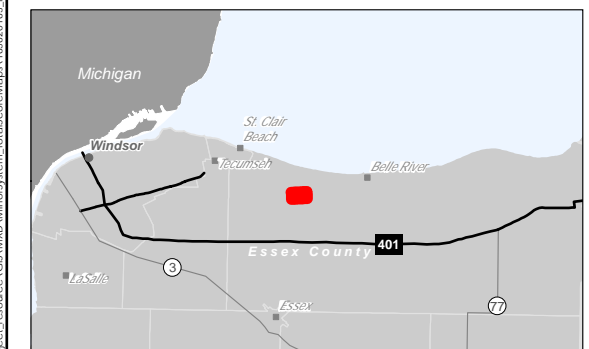
Figure No.

Title: Minor System Assessment - Rosewood, New Lakeshore Centre Estates, St. John, Grandview Gardens & Oakwood

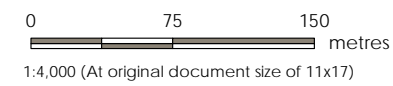
- Notes**
1. Coordinate System: NAD 1983 UTM Zone 17N
  2. Base features produced under license with the Ontario Ministry of Natural Resources and Forestry © Queen's Printer for Ontario, 2017.
  3. Orthoimagery © First Base Solutions, 2016. Imagery Date, 2018.

Disclaimer: Stantec assumes no responsibility for data supplied in electronic format. The recipient accepts full responsibility for verifying the accuracy and completeness of the data. The recipient releases Stantec, its officers, employees, consultants and agents, from any and all claims arising in any way from the content or provision of the data.





Legend		Total Score	
	Parcel Fabric		8 - 10
	Subdivision		6 - 8
	Proposed Pond		4 - 6
	Existing Ponds		2 - 4
	Storm Pond Pump		0 - 2
	Municipal Drain Pump		
	Model Nodes		
	Outfalls		



**Stantec** **DRAFT**

Project Location: Town of Lakeshore  
 Prepared by LMF on 2019-04-01

Client/Project: LAKESHORE SWMP

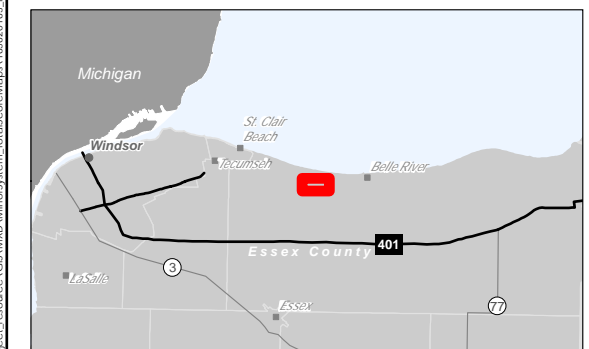
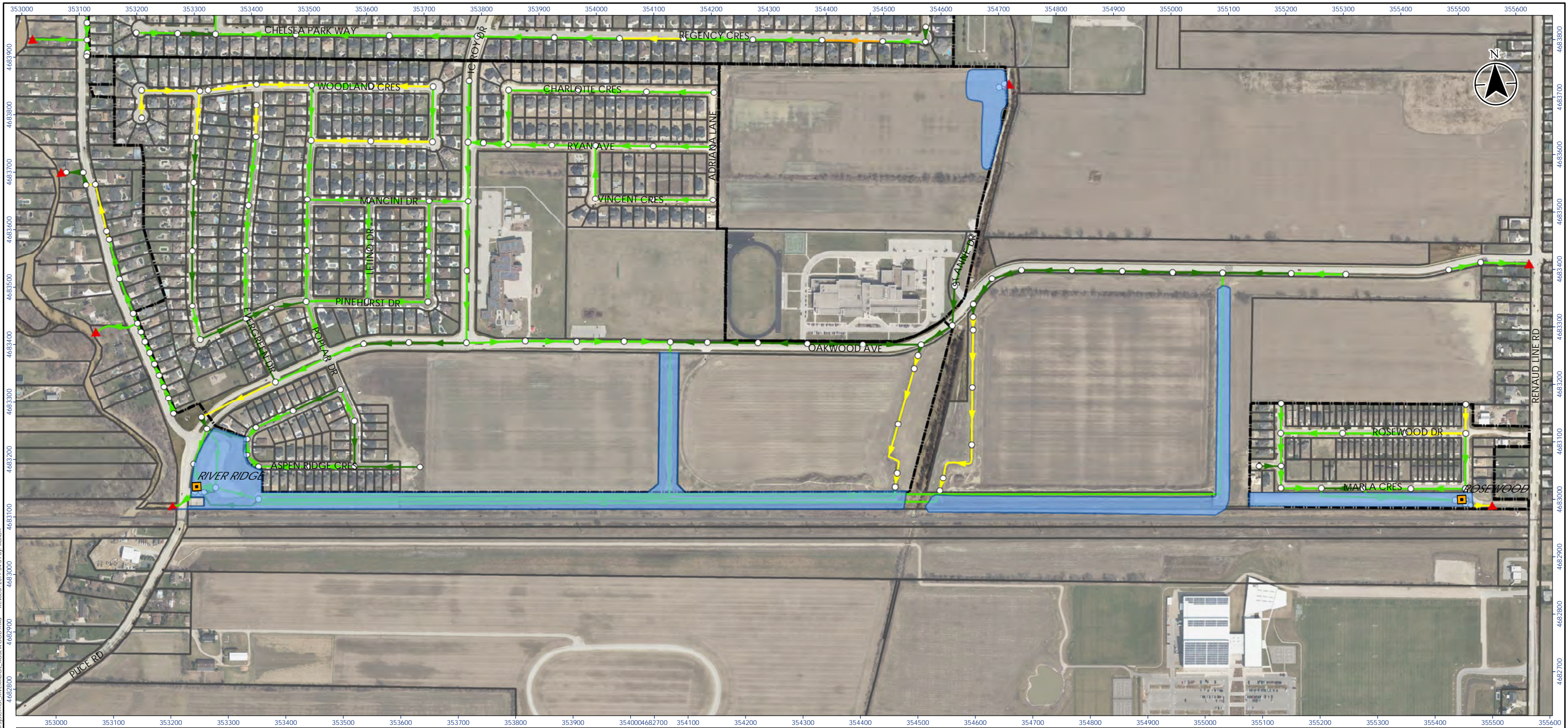
Figure No. \_\_\_\_\_

Title: Minor System Assessment - River Downs

**Notes**  
 1. Coordinate System: NAD 1983 UTM Zone 17N  
 2. Base features produced under license with the Ontario Ministry of Natural Resources and Forestry © Queen's Printer for Ontario, 2017.  
 3. Orthoimagery © First Base Solutions, 2016. Imagery Date, 2018.

Disclaimer: Stantec assumes no responsibility for data supplied in electronic format. The recipient accepts full responsibility for verifying the accuracy and completeness of the data. The recipient releases Stantec, its officers, employees, consultants and agents, from any and all claims arising in any way from the content or provision of the data.

W:\active\165620165\Project\_Resources\GIS\Map\MinorSystem\_TotalsScoreMap\165620165\_MinorSystemG\_RIVERDOWNS.mxd Revised: 2019-04-01 By: Morlan 4682000 4682100 4682200 4682300 4682400 4682500 4682600 351900 352000 352100 352200 352300 352400 352500 352600 352700 352800 352900 353000 353100 353200 353300 353400

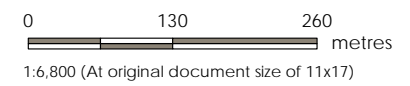


**Legend**

- Parcel Fabric
- Subdivision
- Proposed Pond
- Existing Ponds
- Storm Pond Pump
- Municipal Drain Pump
- Model Nodes
- Outfalls

**Total Score**

- 8 - 10
- 6 - 8
- 4 - 6
- 2 - 4
- 0 - 2



**Stantec** **DRAFT**

Project Location: 165620165 REVA  
 Town of Lakeshore Prepared by LMF on 2019-04-01

Client/Project: LAKESHORE SWMP

Figure No. \_\_\_\_\_

Title: Minor System Assessment - River Ridge & Rosewood

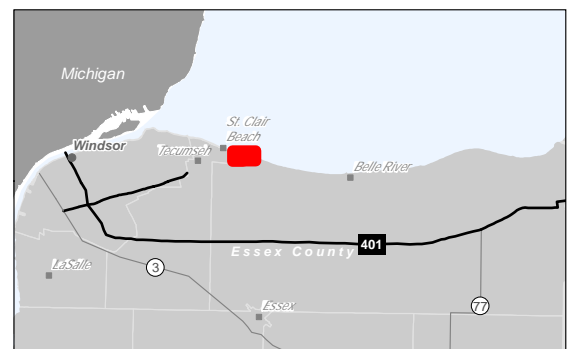
**Notes**

- Coordinate System: NAD 1983 UTM Zone 17N
- Base features produced under license with the Ontario Ministry of Natural Resources and Forestry © Queen's Printer for Ontario, 2017.
- Orthoimagery © First Base Solutions, 2016. Imagery Date, 2018.

Disclaimer: Stantec assumes no responsibility for data supplied in electronic format. The recipient accepts full responsibility for verifying the accuracy and completeness of the data. The recipient releases Stantec, its officers, employees, consultants and agents, from any and all claims arising in any way from the content or provision of the data.

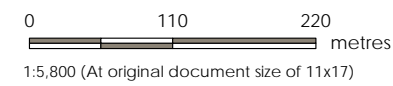


W:\active\165620165\Project\_Resources\GSD\Map\MinorSystem\_TotalsScoreMap\165620165\_MinorSystem.mxd  
 Reviewed: 2019-04-01 By: Ilorian  
 4689000  
 4686100  
 4686200  
 4686300  
 4686400  
 4686500  
 4686600  
 4686700  
 4686800  
 4686900



- Legend**
- Parcel Fabric
  - Subdivision
  - Proposed Pond
  - Existing Ponds
  - Storm Pond Pump
  - Municipal Drain Pump
  - Model Nodes
  - Outfalls

- Total Score**
- 8 - 10
  - 6 - 8
  - 4 - 6
  - 2 - 4
  - 0 - 2
- Note: System in hatch is from a proposed plan. It was included in model to assess impact of contributing flows to existing



**Stantec** **DRAFT**

Project Location: Town of Lakeshore  
 Prepared by LMF on 2019-04-01

Client/Project: LAKESHORE SWMP

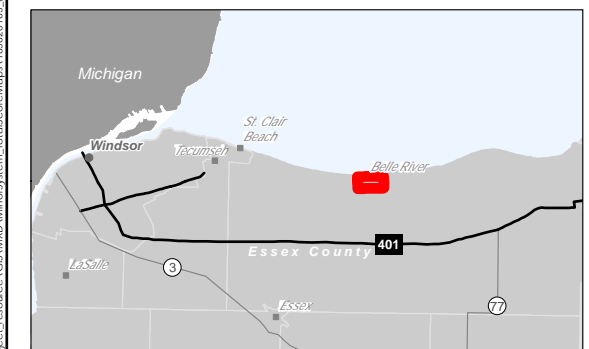
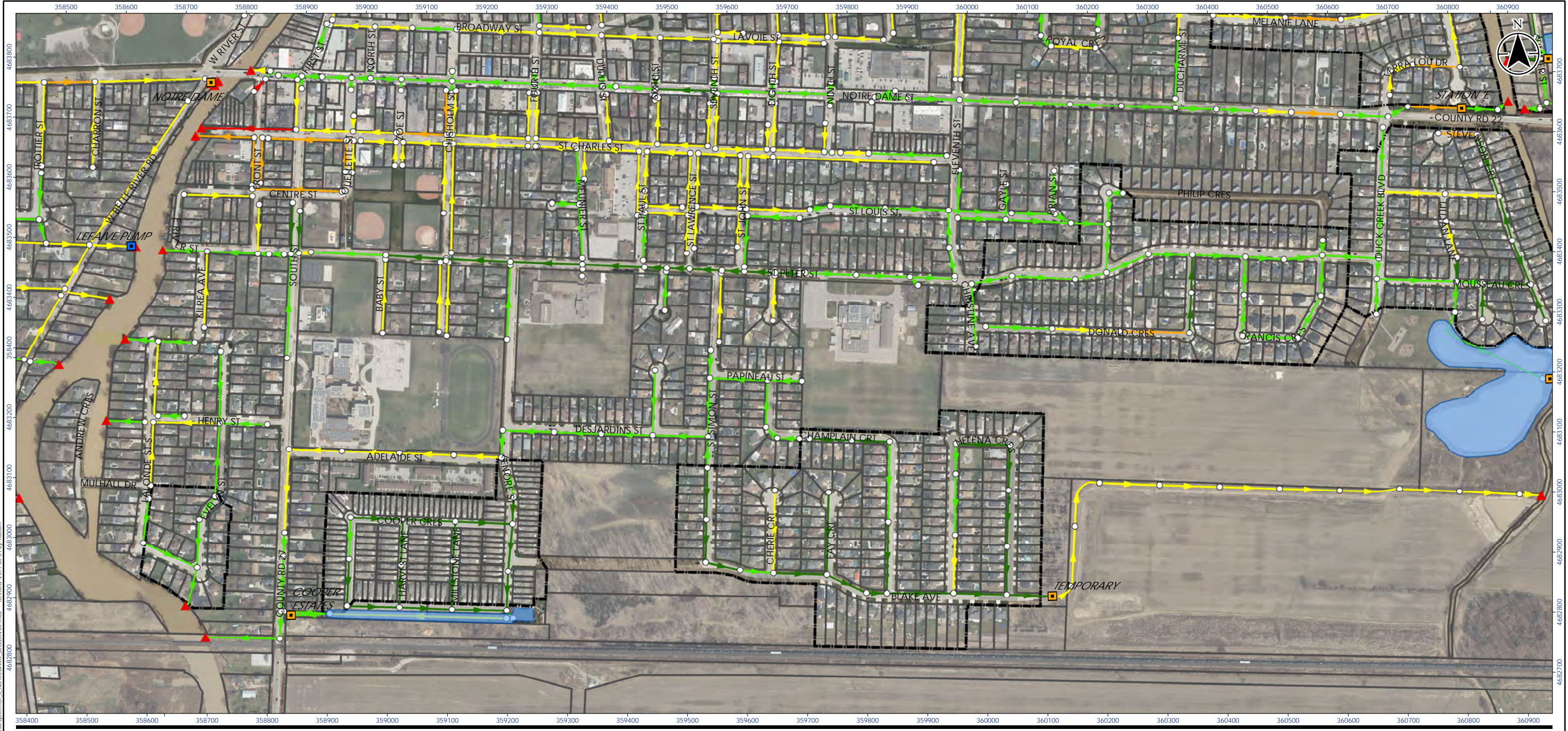
Figure No.:

Title: Minor System Assessment - Russell Woods

**Notes**

1. Coordinate System: NAD 1983 UTM Zone 17N
2. Base features produced under license with the Ontario Ministry of Natural Resources and Forestry © Queen's Printer for Ontario, 2017.
3. Orthoimagery © First Base Solutions, 2016. Imagery Date, 2018.

Disclaimer: Stantec assumes no responsibility for data supplied in electronic format. The recipient accepts full responsibility for verifying the accuracy and completeness of the data. The recipient releases Stantec, its officers, employees, consultants and agents, from any and all claims arising in any way from the content or provision of the data.

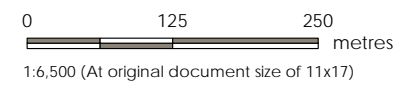


**Legend**

- Parcel Fabric
- Subdivision
- Proposed Pond
- Existing Ponds
- Storm Pond Pump
- Municipal Drain Pump
- Model Nodes
- Outfalls

**Total Score**

- 8 - 10
- 6 - 8
- 4 - 6
- 2 - 4
- 0 - 2



**Stantec**

**DRAFT**

Project Location: Town of Lakeshore  
 Prepared by LMF on 2019-04-01

Client/Project: LAKESHORE SWMP

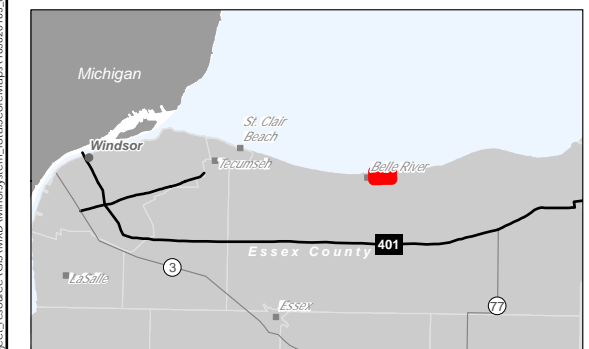
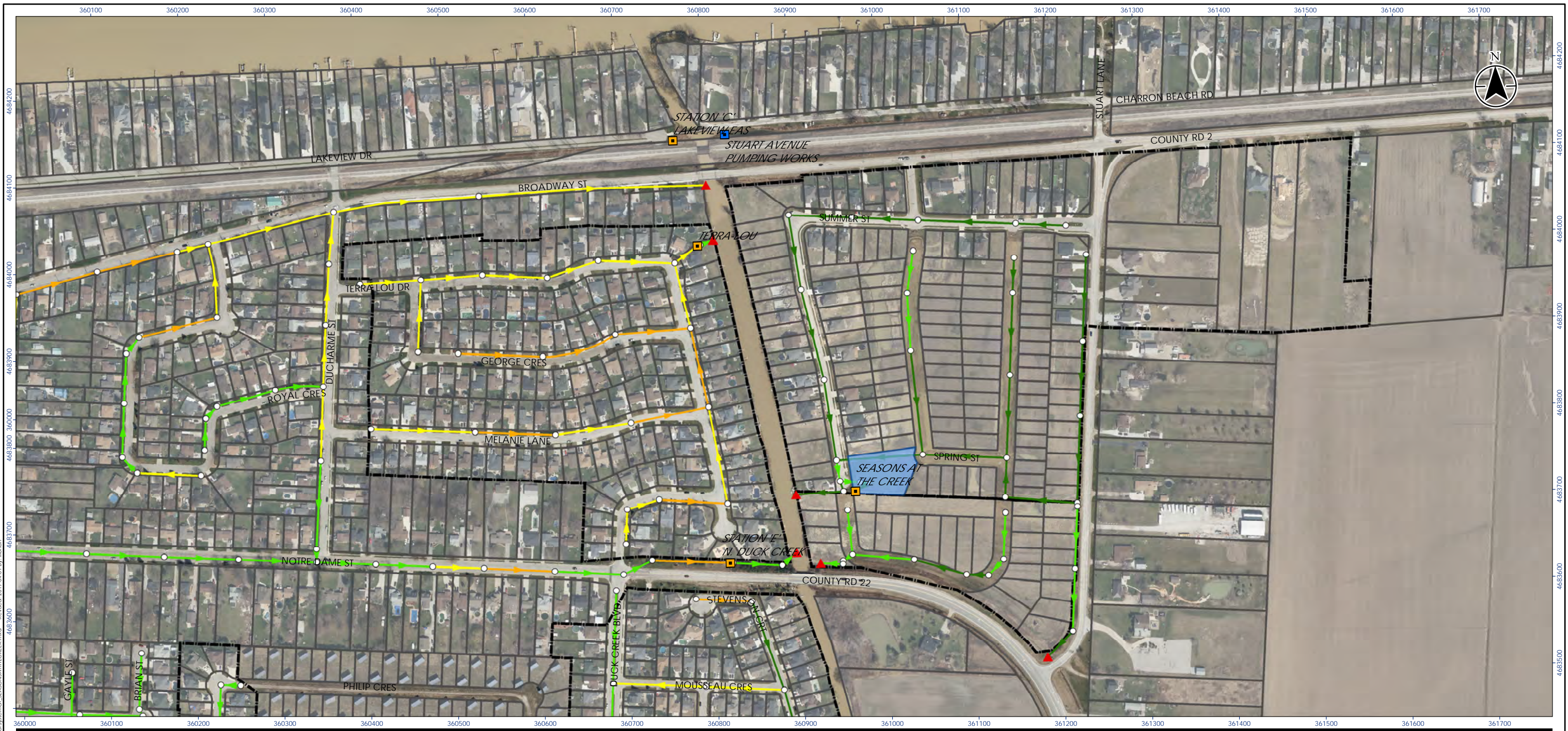
Figure No.:

Title: Minor System Assessment - Belle River: South of Notre Dame Street

**Notes**

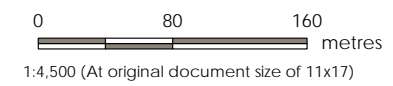
- Coordinate System: NAD 1983 UTM Zone 17N
- Base features produced under license with the Ontario Ministry of Natural Resources and Forestry © Queen's Printer for Ontario, 2017.
- Orthoimagery © First Base Solutions, 2016. Imagery Date, 2018.

Disclaimer: Stantec assumes no responsibility for data supplied in electronic format. The recipient accepts full responsibility for verifying the accuracy and completeness of the data. The recipient releases Stantec, its officers, employees, consultants and agents, from any and all claims arising in any way from the content or provision of the data.



**Legend**

	Parcel Fabric	<b>Total Score</b>
	Subdivision	
	Proposed Pond	
	Existing Ponds	
	Storm Pond Pump	
	Municipal Drain Pump	
	Model Nodes	
	Outfalls	8 - 10 6 - 8 4 - 6 2 - 4 0 - 2



**Stantec** **DRAFT**

Project Location: Town of Lakeshore  
 Prepared by LMF on 2019-04-01

Client/Project: LAKESHORE SWMP

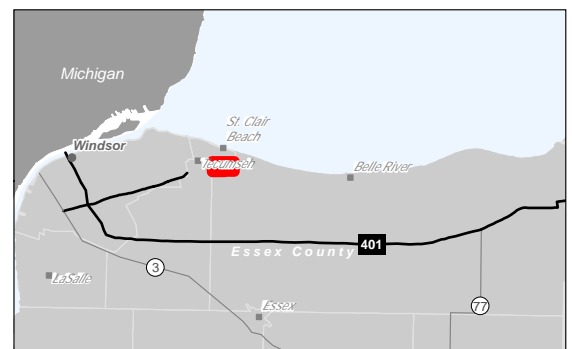
Figure No. \_\_\_\_\_

Title: **Minor System Assessment - Seasons at the Creek**

**Notes**

- Coordinate System: NAD 1983 UTM Zone 17N
- Base features produced under license with the Ontario Ministry of Natural Resources and Forestry © Queen's Printer for Ontario, 2017.
- Orthoimagery © First Base Solutions, 2016. Imagery Date, 2018.

Disclaimer: Stantec assumes no responsibility for data supplied in electronic format. The recipient accepts full responsibility for verifying the accuracy and completeness of the data. The recipient releases Stantec, its officers, employees, consultants and agents, from any and all claims arising in any way from the content or provision of the data.

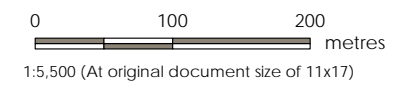


**Legend**

- Parcel Fabric
- Subdivision
- Proposed Pond
- Existing Ponds
- Storm Pond Pump
- Municipal Drain Pump
- Model Nodes
- Outfalls

**Total Score**

- 8 - 10
- 6 - 8
- 4 - 6
- 2 - 4
- 0 - 2



**DRAFT**

Project Location: 165620165 REVA  
Town of Lakeshore  
Prepared by LMF on 2019-04-01

Client/Project: LAKESHORE SWMP

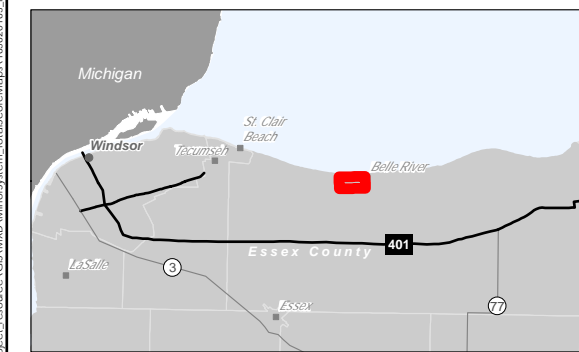
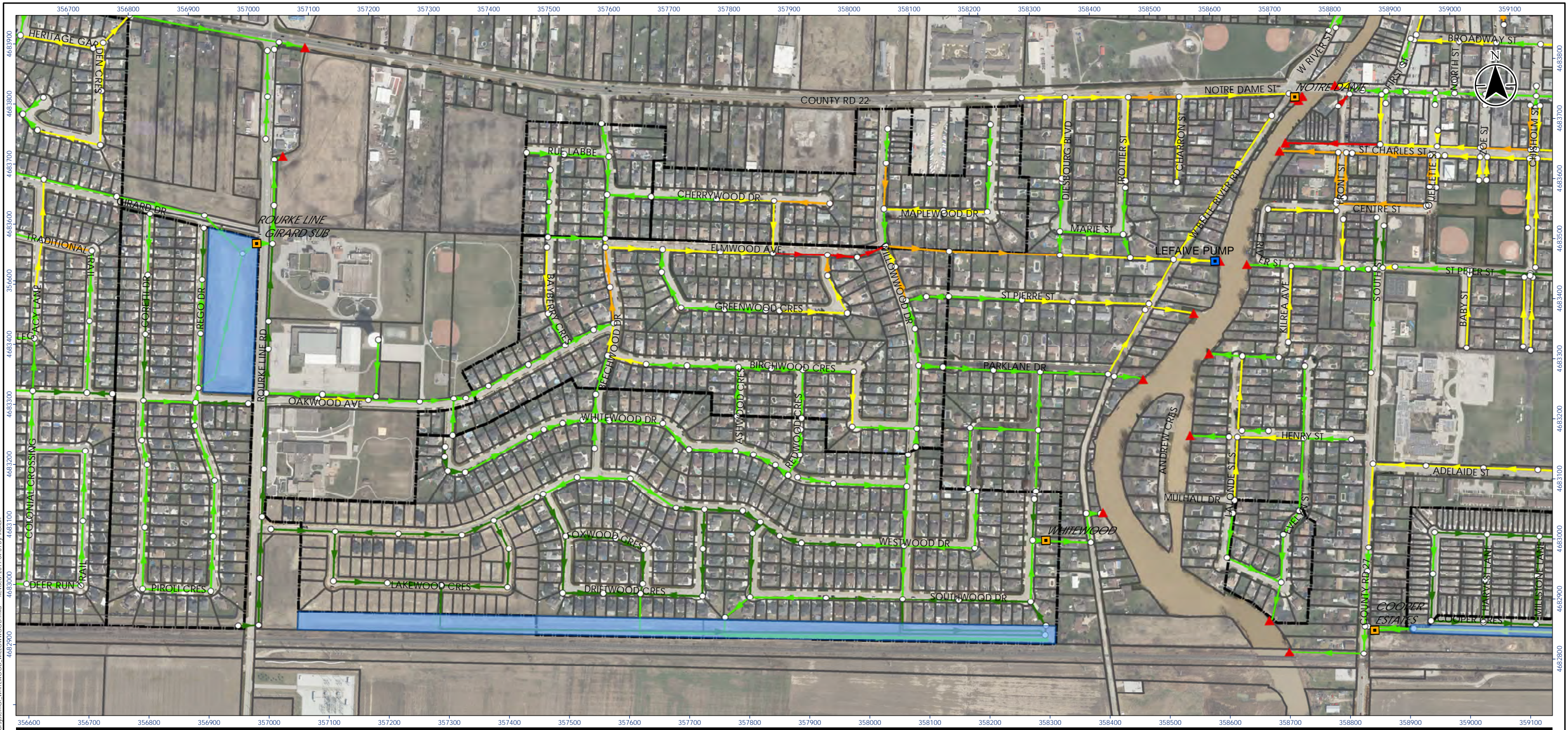
Figure No. \_\_\_\_\_

Title: Minor System Assessment - St.Clair Shores

**Notes**

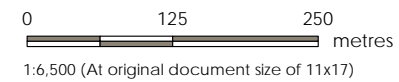
- Coordinate System: NAD 1983 UTM Zone 17N
- Base features produced under license with the Ontario Ministry of Natural Resources and Forestry © Queen's Printer for Ontario, 2017.
- Orthoimagery © First Base Solutions, 2016. Imagery Date, 20XX.

Disclaimer: Stantec assumes no responsibility for data supplied in electronic format. The recipient accepts full responsibility for verifying the accuracy and completeness of the data. The recipient releases Stantec, its officers, employees, consultants and agents, from any and all claims arising in any way from the content or provision of the data.



**Legend**

- Parcel Fabric
  - Subdivision
  - Proposed Pond
  - Existing Ponds
  - Storm Pond Pump
  - Municipal Drain Pump
  - Model Nodes
  - Outfalls
- | Total Score |        |
|-------------|--------|
|             | 8 - 10 |
|             | 6 - 8  |
|             | 4 - 6  |
|             | 2 - 4  |
|             | 0 - 2  |



**DRAFT**

Project Location: Town of Lakeshore  
 Prepared by LMF on 2019-04-01

Client/Project: LAKESHORE SWMP

Figure No.

Title: Minor System Assessment - Whitewood, Willowwood, Charron, Labbe

**Notes**

- Coordinate System: NAD 1983 UTM Zone 17N
- Base features produced under license with the Ontario Ministry of Natural Resources and Forestry © Queen's Printer for Ontario, 2017.
- Orthoimagery © First Base Solutions, 2016. Imagery Date, 2018.

Disclaimer: Stantec assumes no responsibility for data supplied in electronic format. The recipient accepts full responsibility for verifying the accuracy and completeness of the data. The recipient releases Stantec, its officers, employees, consultants and agents, from any and all claims arising in any way from the content or provision of the data.

W:\active\165620165\project\_resources\GSD\Map\MinorSystem\_TotalsScoreMap\165620165\_MinorSystemG\_Willowwood.mxd  
 Revised: 2019-04-01 By: Iboran  
 4683000 4683100 4682900  
 356600 356700 356800 356900 357000 357100 357200 357300 357400 357500 357600 357700 357800 357900 358000 358100 358200 358300 358400 358500 358600 358700 358800 358900 359000 359100

**Appendix H**  
**Outfall Assessment**



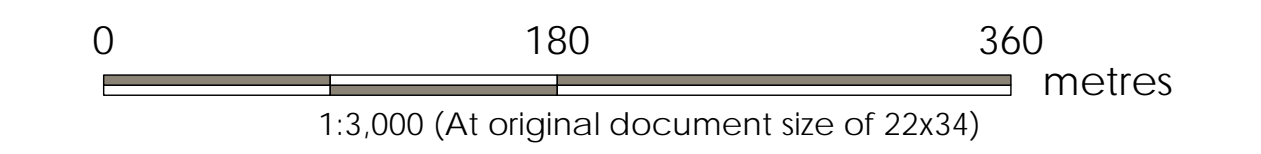


Legend

- Parcel Fabric
- Storm Pond Pump
- Municipal Drain Pump

Outfall Locations: Proposed Bentonite Clay Plug Status

- Install/Inspect
- Okay



Notes

1. Coordinate System: NAD 1983 UTM Zone 17N
2. Base features produced under license with the Ontario Ministry of Natural Resources and Forestry © Queen's Printer for Ontario, 2018.
3. Orthoimagery © First Base Solutions, 2018. Imagery Date, 2018.



Project Location  
Municipality of Lakeshore

165620165 REVA  
Prepared by LMF on 2019-04-02

Client/Project  
LAKESHORE SWMP

Figure No.

Title  
Outfall Locations - Pike Creek



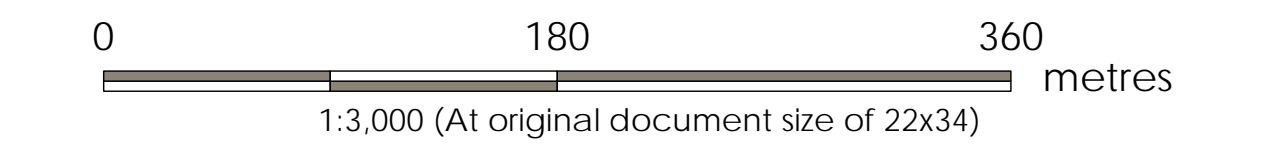
W:\Active\165620165\Project\resources\GIS\MXD\165620165\_Fig\_Outfall\_Locations.mxd  
 Revised: 2019-04-02 By: Marlan

Legend

- Parcel Fabric
- Storm Pond Pump
- Municipal Drain Pump

Outfall Locations: Proposed Bentonite Clay Plug Status

- Install/Inspect
- Okay



Notes

1. Coordinate System: NAD 1983 UTM Zone 17N
2. Base features produced under license with the Ontario Ministry of Natural Resources and Forestry © Queen's Printer for Ontario, 2018.
3. Orthoimagery © First Base Solutions, 2018. Imagery Date, 2018.



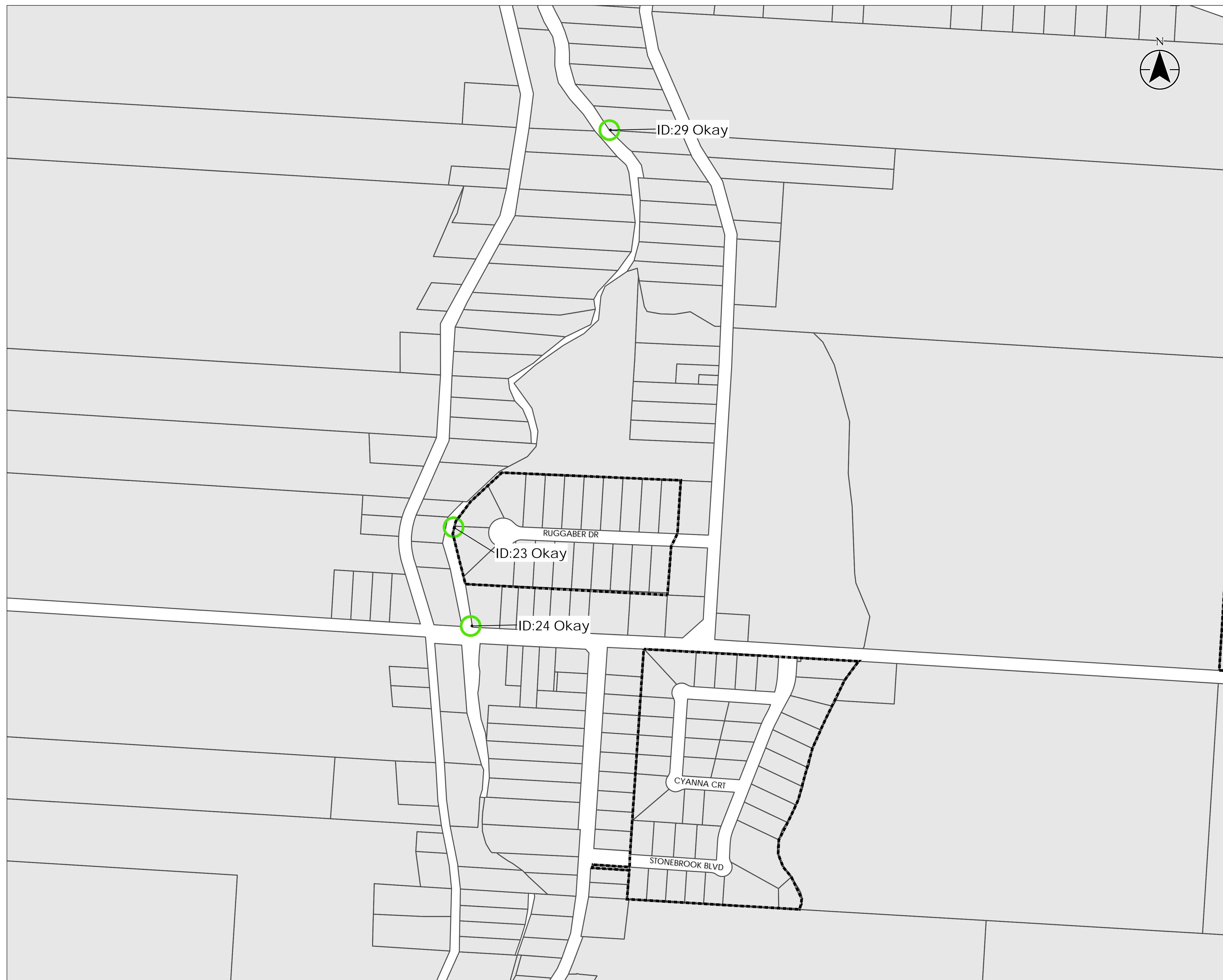
Project Location  
Municipality of Lakeshore

165620165 REVA  
Prepared by LMF on 2019-04-02

Client/Project  
LAKESHORE SWMP

Figure No.

Title  
Outfall Locations - Pike Creek

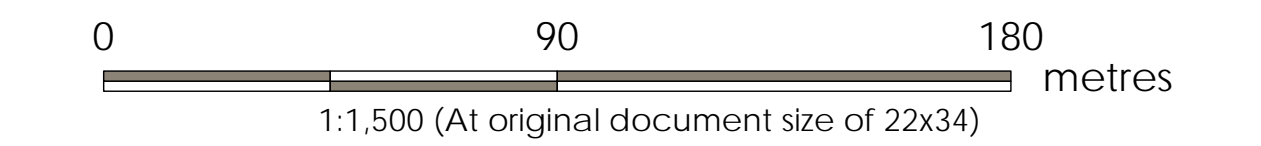


Legend

- Parcel Fabric
- Storm Pond Pump
- Municipal Drain Pump

Outfall Locations: Proposed Bentonite Clay Plug Status

- Install/Inspect
- Okay



Notes

1. Coordinate System: NAD 1983 UTM Zone 17N
2. Base features produced under license with the Ontario Ministry of Natural Resources and Forestry © Queen's Printer for Ontario, 2018.
3. Orthoimagery © First Base Solutions, 2018. Imagery Date, 2018.



Project Location  
Municipality of Lakeshore

165620165 REVA  
Prepared by LMF on 2019-04-02

Client/Project  
LAKESHORE SWMP

Figure No.

Title  
Outfall Locations - Puce River



M:\Active\165620165\project\resource\GIS\MRD\165620165\_Fig\_Outfall\_Locations.mxd Reviewed: 2019-04-02 By: Merlan

Legend

Parcel Fabric

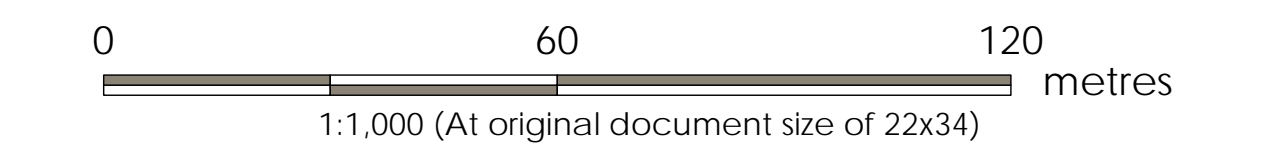
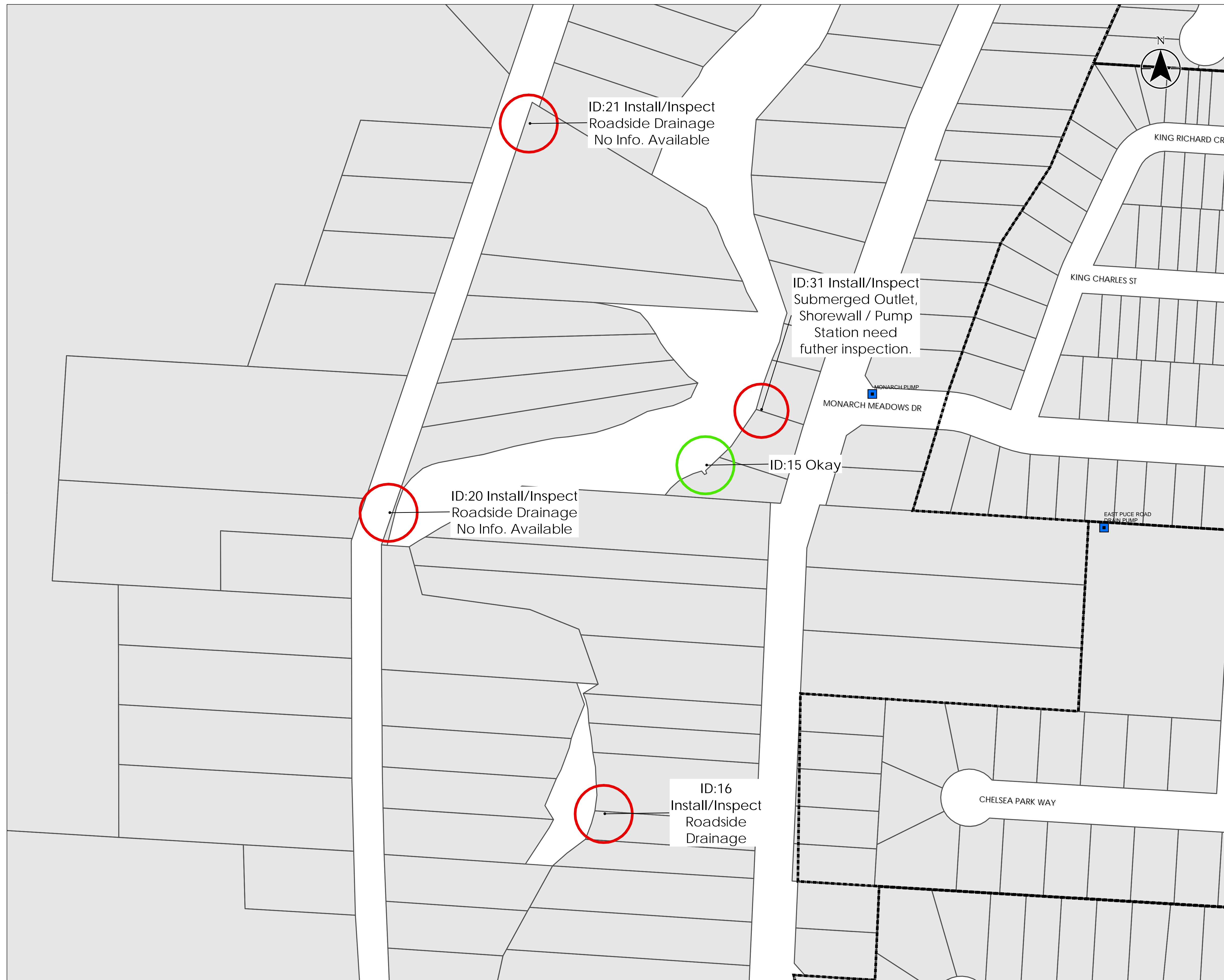
Storm Pond Pump

Municipal Drain Pump

Outfall Locations: Proposed Bentonite Clay Plug Status

Install/Inspect

Okay



Notes

1. Coordinate System: NAD 1983 UTM Zone 17N
2. Base features produced under license with the Ontario Ministry of Natural Resources and Forestry © Queen's Printer for Ontario, 2018.
3. Orthoimagery © First Base Solutions, 2018. Imagery Date, 2018.



Project Location  
Municipality of Lakeshore

165620165 REVA  
Prepared by LMF on 2019-04-02

Client/Project  
LAKESHORE SWMP

Figure No.

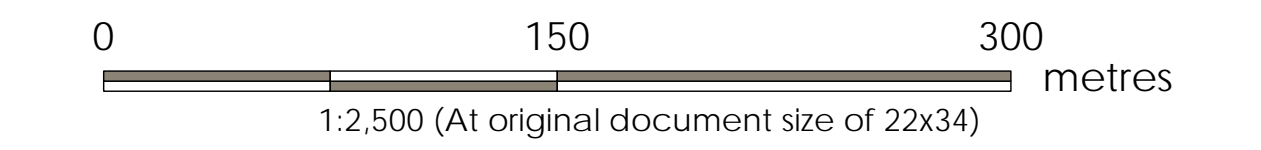
Title  
Outfall Locations - Puce River

Legend

- Parcel Fabric
- Storm Pond Pump
- Municipal Drain Pump

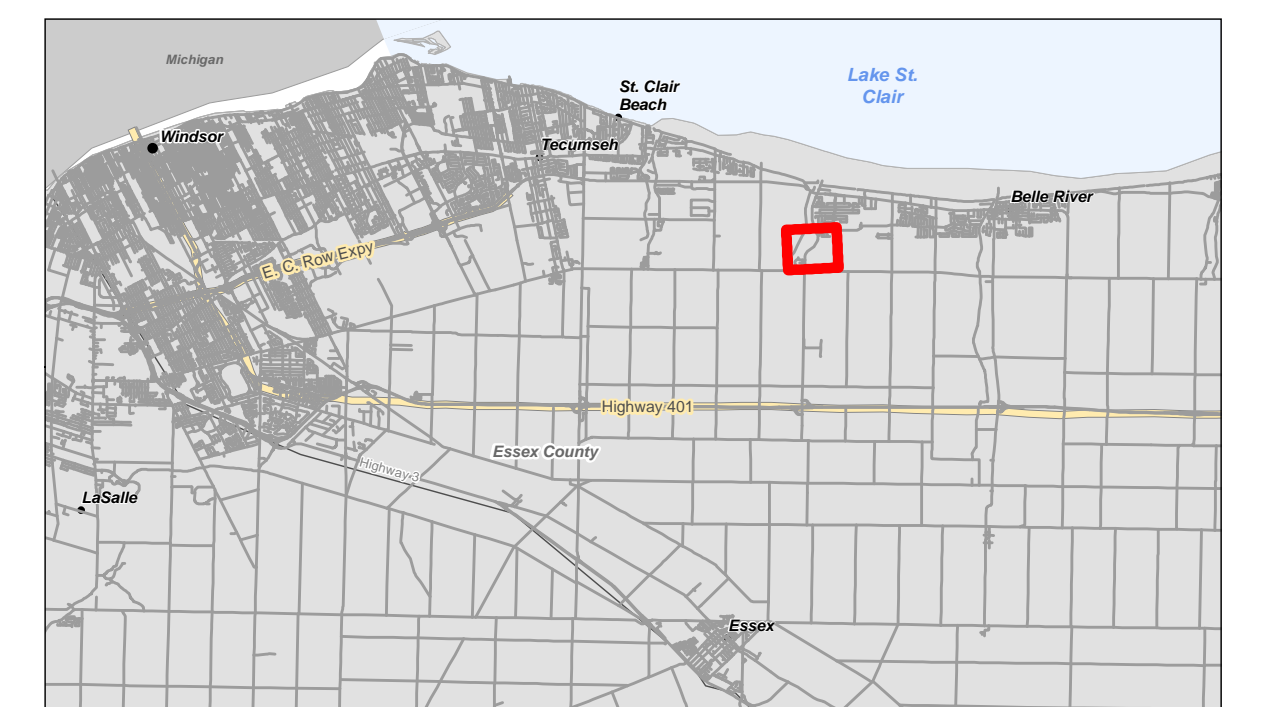
Outfall Locations: Proposed Bentonite Clay Plug Status

- Install/Inspect
- Okay



Notes

1. Coordinate System: NAD 1983 UTM Zone 17N
2. Base features produced under license with the Ontario Ministry of Natural Resources and Forestry © Queen's Printer for Ontario, 2018.
3. Orthoimagery © First Base Solutions, 2018. Imagery Date, 2018.



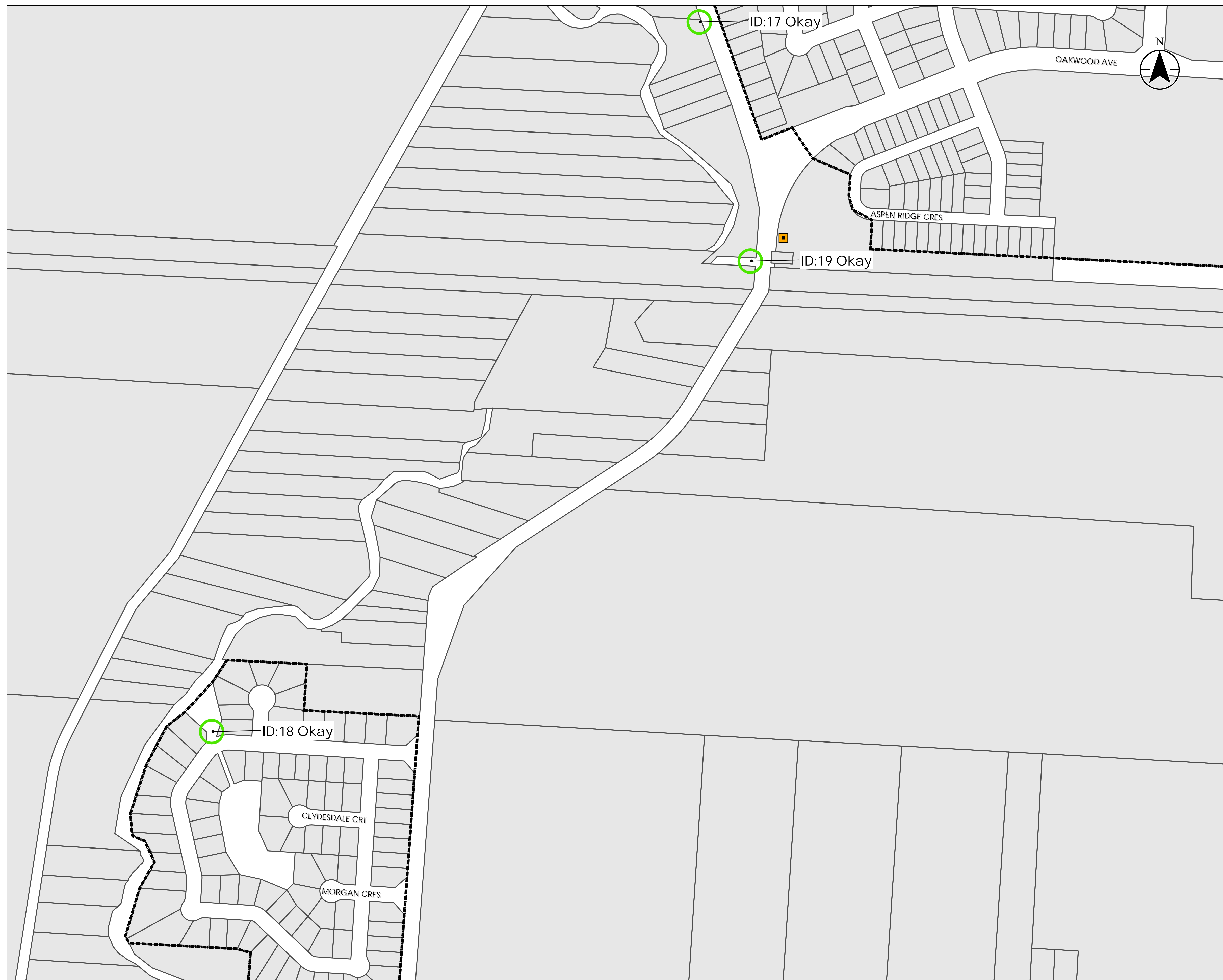
Project Location  
Municipality of Lakeshore

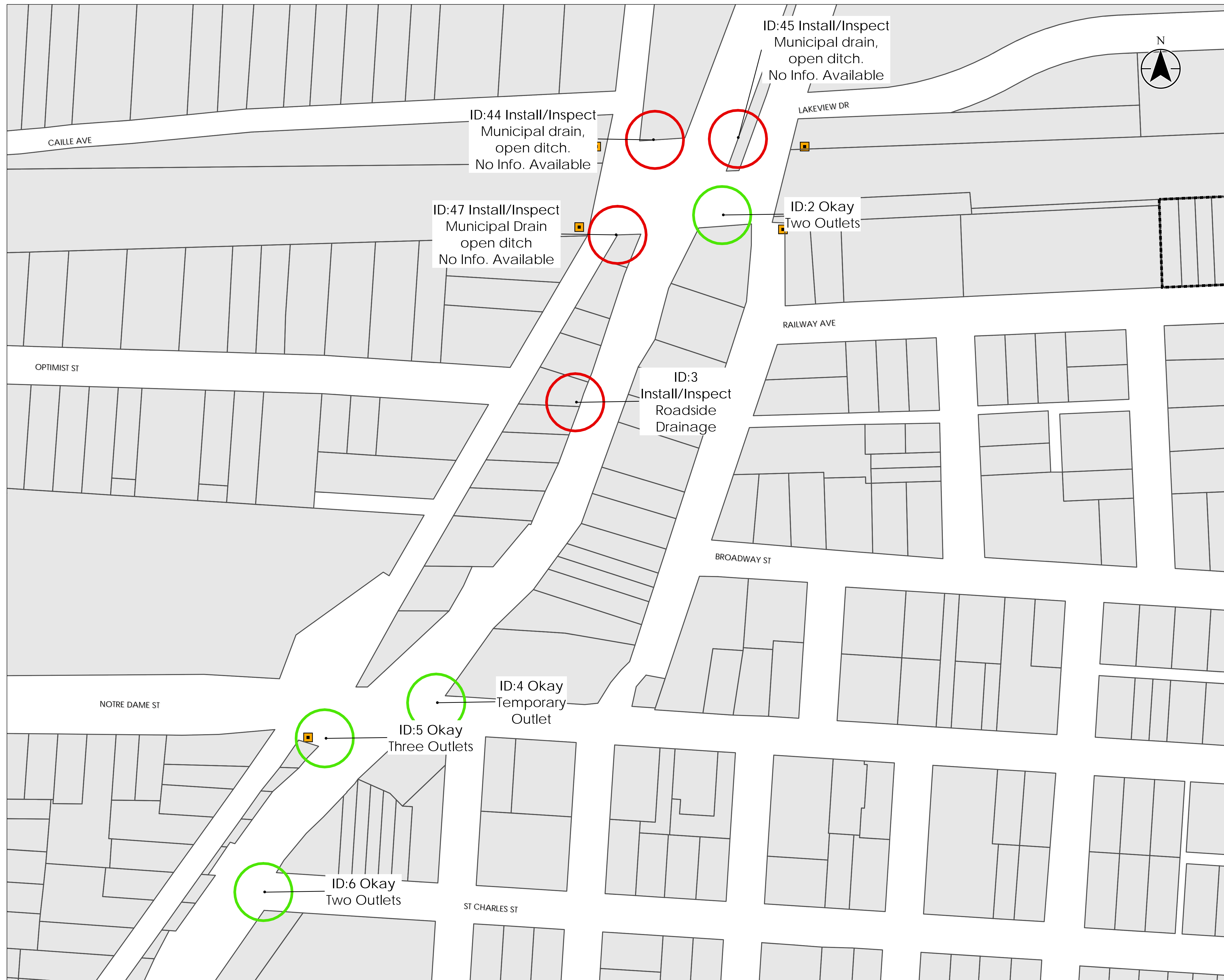
165620165 REVA  
Prepared by LMF on 2019-04-02

Client/Project  
LAKESHORE SWMP

Figure No.

Title  
Outfall Locations - Puce River



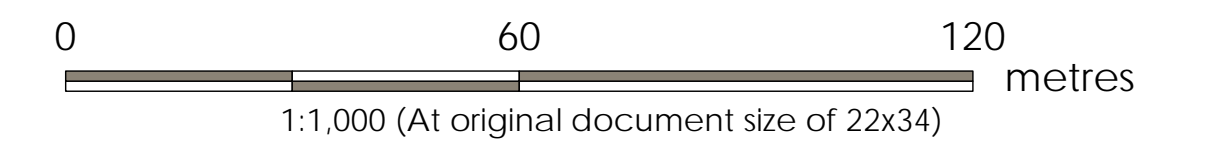


Legend

- Parcel Fabric
- Storm Pond Pump
- Municipal Drain Pump

Outfall Locations: Proposed Bentonite Clay Plug Status

- Install/Inspect
- Okay



Notes

1. Coordinate System: NAD 1983 UTM Zone 17N
2. Base features produced under license with the Ontario Ministry of Natural Resources and Forestry © Queen's Printer for Ontario, 2018.
3. Orthoimagery © First Base Solutions, 2018. Imagery Date, 2018.



Project Location  
Municipality of Lakeshore

165620165 REVA  
Prepared by LMF on 2019-04-02

Client/Project  
LAKESHORE SWMP

Figure No.

Title  
Outfall Locations - Belle River

Legend

Parcel Fabric

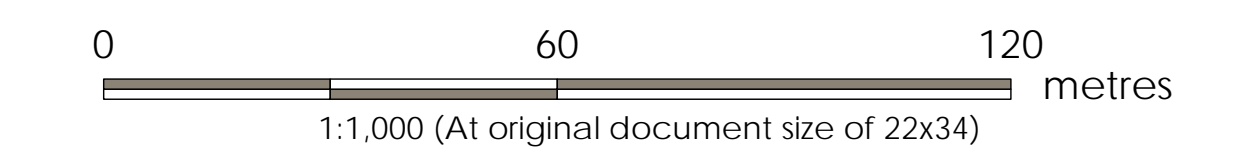
Storm Pond Pump

Municipal Drain Pump

Outfall Locations: Proposed Bentonite Clay Plug Status

Install/Inspect

Okay



Notes

1. Coordinate System: NAD 1983 UTM Zone 17N
2. Base features produced under license with the Ontario Ministry of Natural Resources and Forestry © Queen's Printer for Ontario, 2018.
3. Orthoimagery © First Base Solutions, 2018. Imagery Date, 2018.



Project Location  
Municipality of Lakeshore

165620165 REVA  
Prepared by LMF on 2019-04-02

Client/Project  
LAKESHORE SWMP

Figure No.

Title  
Outfall Locations - Belle River

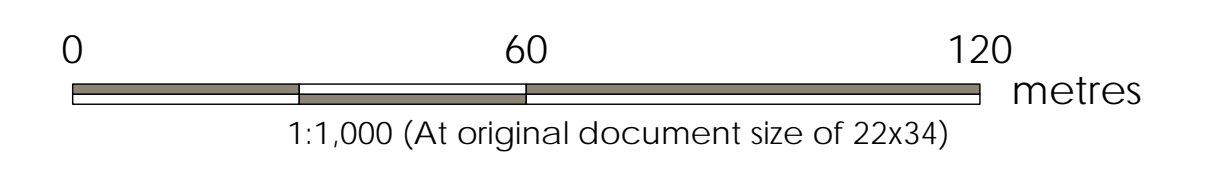


W:\Active\165620165\Project\resources\GIS\MXD\165620165\_Fig\_Outfall\_Locations.mxd Reviewed: 2019-04-02 By: Marlan



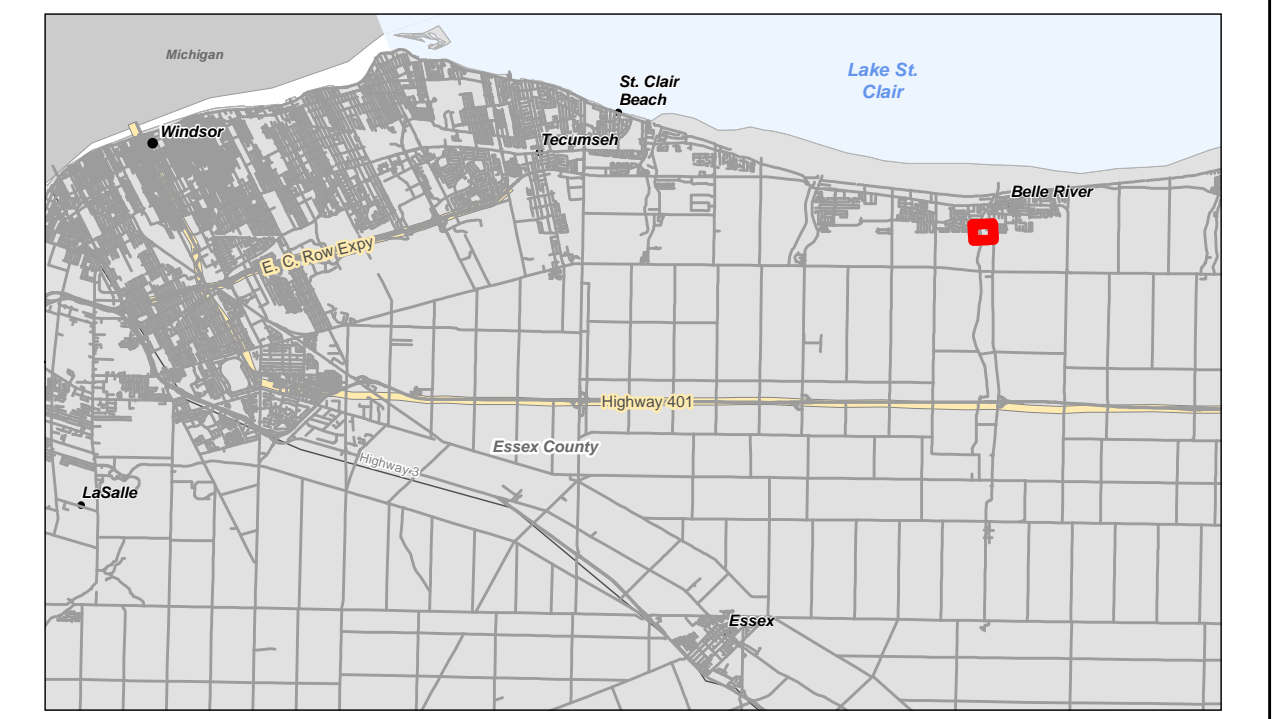
Legend

- Parcel Fabric
- Storm Pond Pump
- Municipal Drain Pump
- Outfall Locations: Proposed Bentonite Clay Plug Status
- Install/Inspect
- Okay



Notes

1. Coordinate System: NAD 1983 UTM Zone 17N
2. Base features produced under license with the Ontario Ministry of Natural Resources and Forestry © Queen's Printer for Ontario, 2018.
3. Orthoimagery © First Base Solutions, 2018. Imagery Date, 2018.



Project Location  
Municipality of Lakeshore

165620165 REVA  
Prepared by LMF on 2019-04-02

Client/Project  
LAKESHORE SWMP

Figure No.

Title  
Outfall Locations - Belle River

M:\Active\165620165\Project\resource\GIS\MRD\165620165\_Fig\_Outfall\_Locations.mxd - Revised: 2019-04-02 By: Ilorian



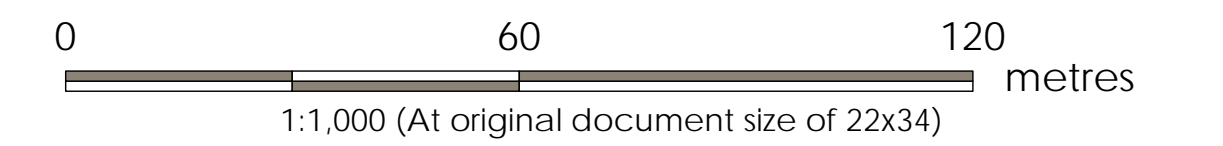
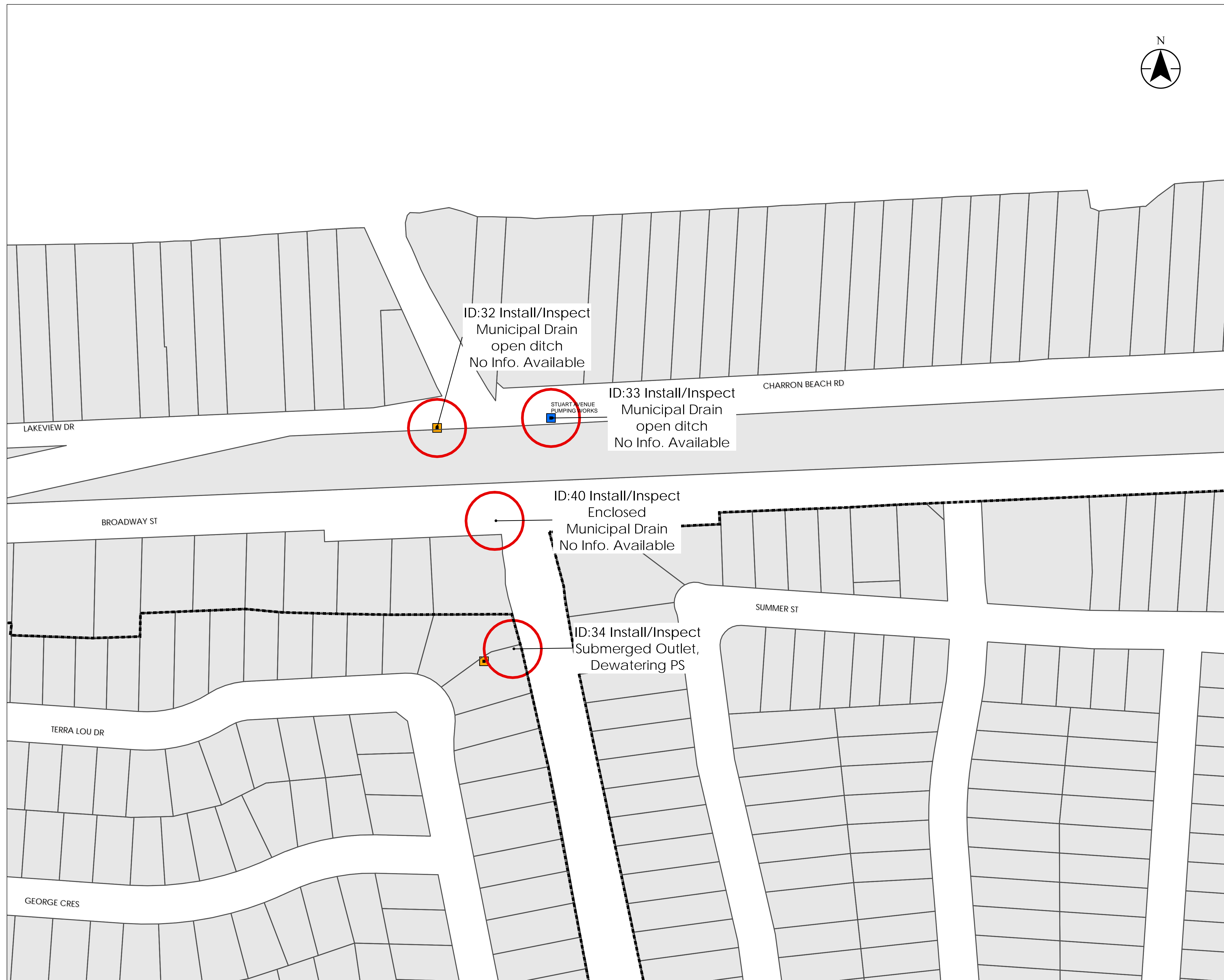


Legend

- Parcel Fabric
- Storm Pond Pump
- Municipal Drain Pump

Outfall Locations: Proposed Bentonite Clay Plug Status

- Install/Inspect
- Okay



Notes

1. Coordinate System: NAD 1983 UTM Zone 17N
2. Base features produced under license with the Ontario Ministry of Natural Resources and Forestry © Queen's Printer for Ontario, 2018.
3. Orthoimagery © First Base Solutions, 2018. Imagery Date, 2018.



Project Location  
Municipality of Lakeshore

165620165 REVA  
Prepared by LMF on 2019-04-02

Client/Project  
LAKESHORE SWMP

Figure No.

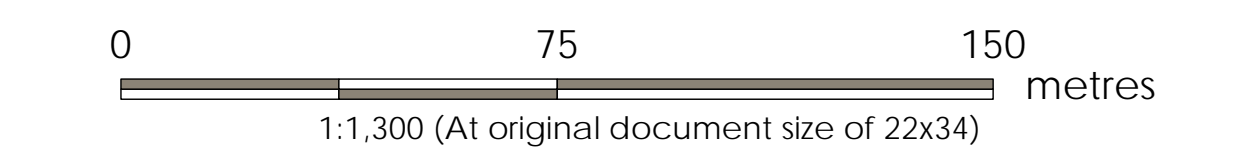
Title  
Outfall Locations - Duck Creek

Legend

- Parcel Fabric
- Storm Pond Pump
- Municipal Drain Pump

Outfall Locations: Proposed Bentonite Clay Plug Status

- Install/Inspect
- Okay



Notes

1. Coordinate System: NAD 1983 UTM Zone 17N
2. Base features produced under license with the Ontario Ministry of Natural Resources and Forestry © Queen's Printer for Ontario, 2018.
3. Orthoimagery © First Base Solutions, 2018. Imagery Date, 2018.



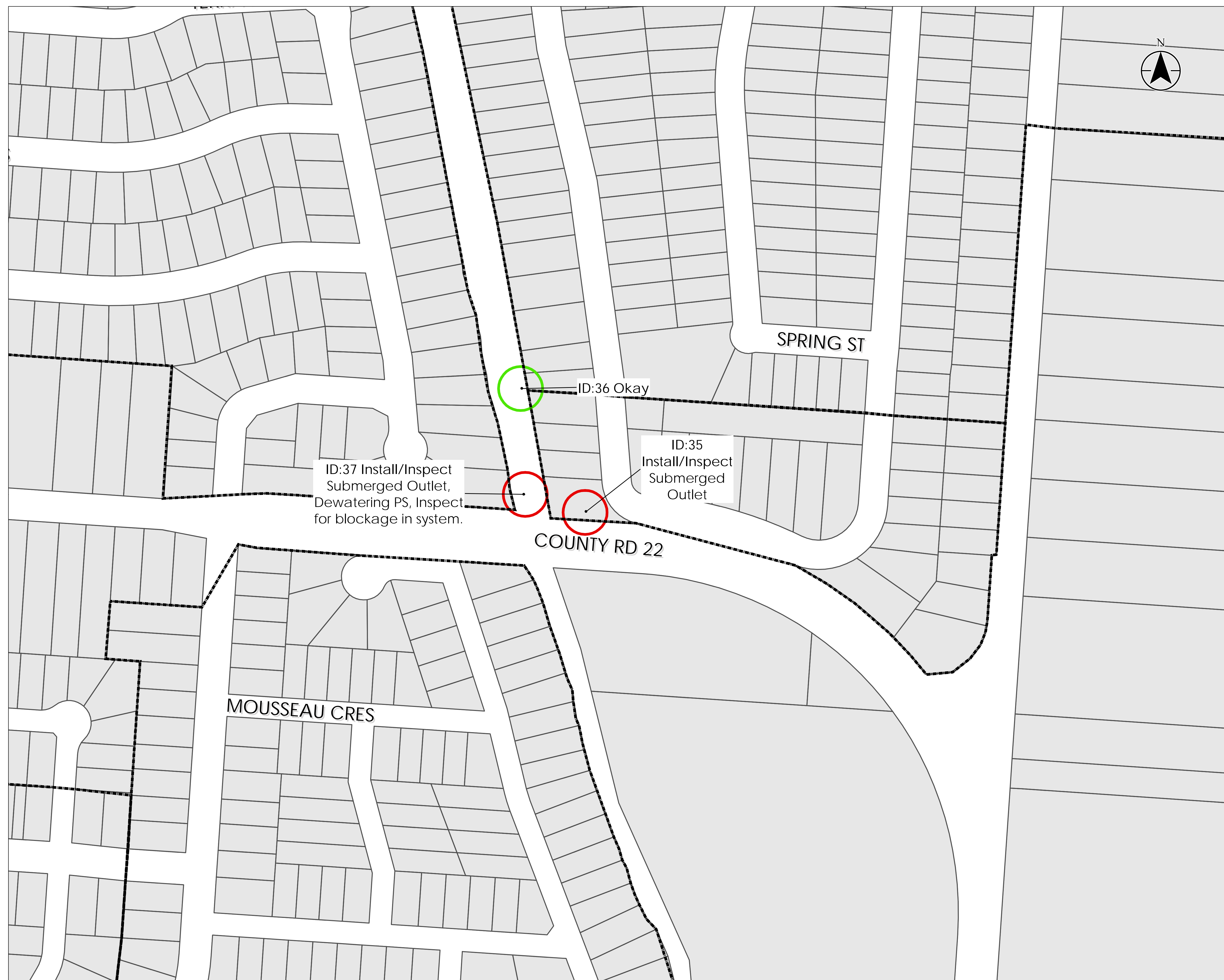
Project Location  
Municipality of Lakeshore

165620165 REVA  
Prepared by LMF on 2019-04-02

Client/Project  
LAKESHORE SWMP

Figure No.

Title  
Outfall Locations - Duck Creek



**Appendix I**  
**Preliminary Opinion of Probable Cost**



**Preliminary Opinion of Probable Cost**  
**Amy Croft - Alternative 3**

Item	Est. Qty.	Unit	Unit Price	Amount
Storm Pond	7,120	c.m.	\$ 20	\$ 142,400
Pond Restoration - Landscaping	8,150	s.m.	\$ 10	\$ 81,500
Land Acquisition Cost	0.9	ha	\$ 130,000	\$ 117,000
SWM Pond Outlet	1	l.s.	\$ 63,712	\$ 63,712
Sewer Improvements	1	l.s.	\$ 174,376	\$ 174,376
Regrading - Spill Point	1	l.s.	\$ 3,367	\$ 3,367
20 % Contingency				\$ 116,471
Sub-Total				\$ 698,826
15% Engineering				\$ 104,824
<b>Total</b>				\$ 800,000

**Preliminary Opinion of Probable Cost**

**Croft Drive - Alternative 2**

Item	Est. Qty.	Unit	Unit Price	Amount
Land Acquisition Cost	0.064	ha	\$ 130,000	\$ 8,294
Regrading - Pond Perimeter for OLF	1	l.s.	\$ 2,744	\$ 2,744
Regrading - Drainage Easement	1	l.s.	\$ 10,375	\$ 10,375
Webbwood Drain - Inlet improvements	1	l.s.	\$ 14,000	\$ 14,000
20 % Contingency				\$ 4,283
Sub-Total				\$ 39,695
15% Engineering				\$ 5,954
<b>Total</b>				\$ 46,000

**Preliminary Opinion of Probable Cost  
Chelsea Parkway - Alternative 3**

Item	Est. Qty.	Unit	Unit Price	Amount
Regrading Street Stub	1	l.s.	\$ 67,796	\$ 67,796
20 % Contingency				\$ 13,559
Sub-Total				\$ 81,355
15% Engineering				\$ 12,203
<b>Total</b>				<b>\$ 93,600</b>

**Preliminary Opinion of Probable Cost**

**Terra Lou - Alternative 2**

Item	Est. Qty.	Unit	Unit Price	Amount
High Capacity Inlet	1	each	\$ 5,000	\$ 5,000.00
Backwater Prevention	1	each		
Overflow & Manhole Structure	1	l.s.	\$ 49,277	\$ 49,277
20 % Contingency				\$ 10,855
Sub-Total				\$ 65,132
15% Engineering				\$ 9,770
<b>Total</b>				\$ 100,000

Preliminary Opinion of Probable Cost  
 Leffler and Hood Drain - Alternative 4

Item	Est. Qty.	Unit	Unit Price	Amount
<b>Patillo Road Reconstruction</b>				
Automated Sluice Gate	1	l.s.	\$ 150,000	\$150,000
South Patillo Enclosure: 1.2 x 2.4m Box Culvert	1500	m	\$ 3,970	\$5,955,000
20 % Contingency				\$1,221,000
15% Engineering				\$916,000
			Sub-Total	\$8,242,000
<b>Stormwater Master Plan Recommendations</b>				
Leffler Pump Station Backup Power	1	l.s.	\$ 500,000	\$500,000
North Patillo Enclosure: 1.2 x 2.4m Box Culvert	590	m	\$ 3,970	\$2,342,000
North Patillo Road Removals, Resoration & Improvements	590	m	\$ 1,300	\$767,000
Outlet Pump Upgrades	1	l.s.	\$ 650,000	\$650,000
20 % Contingency				\$852,000
15% Engineering				\$639,000
			Sub-Total	\$5,750,000
			<b>TOTAL</b>	<b>\$13,992,000</b>



**Preliminary Opinion of Probable Cost  
Country Walk - Alternative 2**

Item	Est. Qty.	Unit	Unit Price	Amount
Storm Pond	20,500	c.m.	\$ 20	\$ 410,000
Pond Restoration - Landscaping	7,023	s.m.	\$ 10	\$ 70,230
Sewer Removal	1	l.s.	\$ 8,127	\$ 8,127
20 % Contingency				\$ 97,671
Sub-Total				\$ 586,028
15% Engineering				\$ 87,904
<b>Total</b>				<b>\$ 700,000</b>

**Preliminary Opinion of Probable Cost**

**Lefaive Drain - Alternative 2**

Item	Est. Qty.	Unit	Unit Price	Amount
Pump Station - Improvement	1	I.s.	\$ 3,600,000	\$ 3,600,000
Anti-Seepage Collar	1	I.s.	\$ 3,000	\$ 3,000
Sewer Upgrades	1	I.s.	\$ 1,434,171	\$ 1,434,171
Sewer Removals	1	I.s.	\$ 29,280	\$ 29,280
Regrading	1	I.s.	\$ 266,676	\$ 266,676
20 % Contingency				\$ 1,066,625
Sub-Total				\$ 6,399,752
15% Engineering				\$ 959,963
<b>Total</b>				<b>\$ 7,400,000</b>

**Preliminary Opinion of Probable Cost**  
**Seasons at the Creek - Alternative 2**

Item	Est. Qty.	Unit	Unit Price	Amount
Pump Outlet Pipe	1	I.s.	\$ 80,000	\$ 80,000
20 % Contingency				\$ 16,000
Sub-Total				\$ 96,000
15% Engineering				\$ 14,400
<b>Total</b>				\$ 100,000

**Preliminary Opinion of Probable Cost  
Forest Hills/Bacon - Alternative 3**

Item	Est. Qty.	Unit	Unit Price	Amount
Pump Station Upgrades	1	I.s.	\$ 1,200,000	\$ 1,200,000
20 % Contingency				\$ 240,000
Sub-Total				\$ 1,440,000
15% Engineering				\$ 216,000
<b>Total</b>				\$ 1,700,000